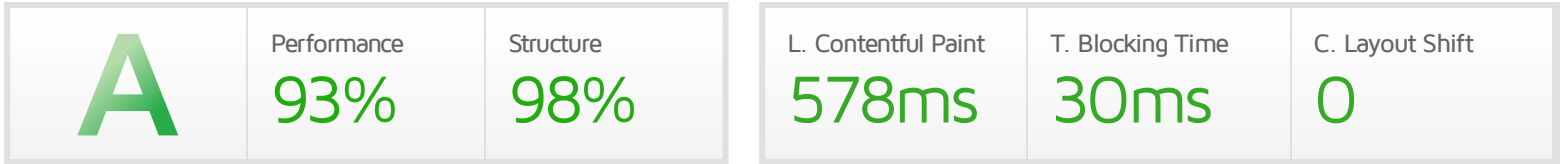




## Performance Report for: https://www.thewickerbasket.co.uk/

Report generated: Thu, Sep 30, 2021 10:14 AM +0100  
 Test Server Location: London, UK  
 Using: Chrome (Desktop) 90.0.4430.212, Lighthouse 8.3.0



### Top Issues

IMPACT	AUDIT	
Med-Low	Serve static assets with an efficient cache policy	Potential savings of 107KB
Low	Avoid an excessive DOM size	778 elements
Low	Eliminate render-blocking resources	Potential savings of 48ms
Low	Avoid enormous network payloads	Total size was 1.28MB
Low	Properly size images	Potential savings of 19.4KB

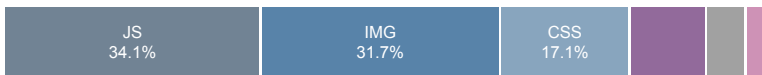
### Page Details



Total Page Size - 1.28MB



Total Page Requests - 41



■ HTML 
 ■ JS 
 ■ CSS 
 ■ IMG 
 ■ Video 
 ■ Font 
 ■ Other

### How does this affect me?

Today's web user expects a fast and seamless website experience. Delivering that fast experience can result in increased visits, conversions and overall happiness.

As if you didn't need more incentive, **Google has announced that they are using page speed in their ranking algorithm.**

### About GTmetrix

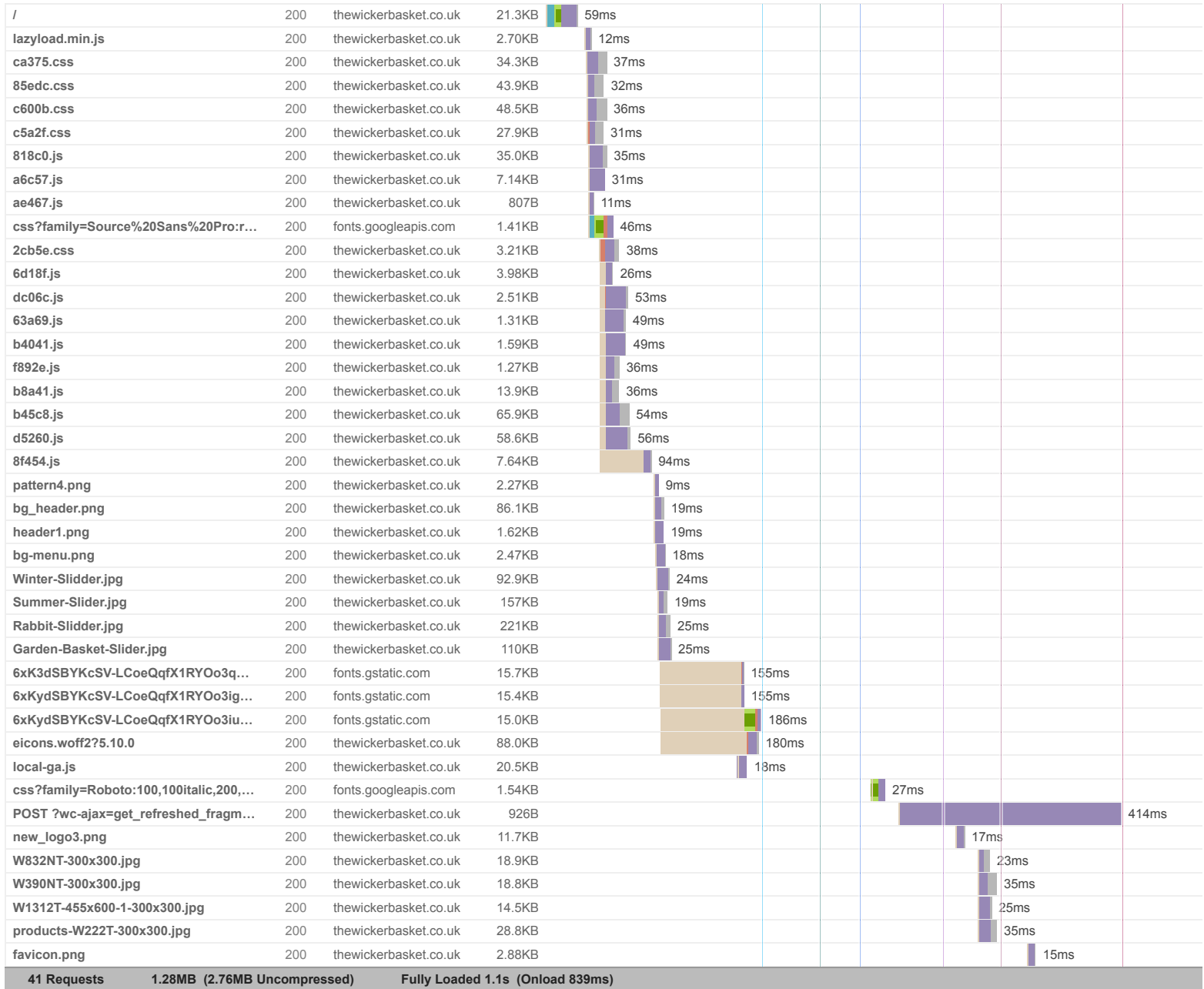


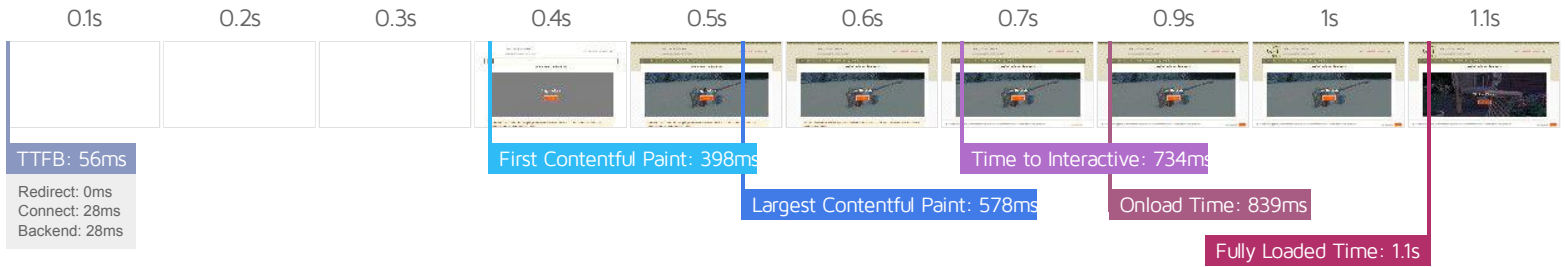
GTmetrix is developed by the good folks at Carbon60, a Canadian hosting company with over 25 years experience in web technology.

<https://carbon60.com/>

The waterfall chart displays the loading behaviour of your site in your selected browser. It can be used to discover simple issues such as 404's or more complex issues such as external resources blocking page rendering.

Levels Basket Centre - Supplier of natural wicker products





### Performance Metrics

<p><b>First Contentful Paint</b></p> <p>How quickly content like text or images are painted onto your page. A good user experience is 0.9s or less.</p>	<p>Good - Nothing to do here</p> <p><b>397ms</b></p>	<p><b>Time to Interactive</b></p> <p>How long it takes for your page to become fully interactive. A good user experience is 2.5s or less.</p>	<p>Good - Nothing to do here</p> <p><b>733ms</b></p>
<p><b>Speed Index</b></p> <p>How quickly the contents of your page are visibly populated. A good user experience is 1.3s or less.</p>	<p>Much longer than recommended</p> <p><b>2.8s</b></p>	<p><b>Total Blocking Time</b></p> <p>How much time is blocked by scripts during your page loading process. A good user experience is 150ms or less.</p>	<p>Good - Nothing to do here</p> <p><b>30ms</b></p>
<p><b>Largest Contentful Paint</b></p> <p>How long it takes for the largest element of content (e.g. a hero image) to be painted on your page. A good user experience is 1.2s or less.</p>	<p>Good - Nothing to do here</p> <p><b>578ms</b></p>	<p><b>Cumulative Layout Shift</b></p> <p>How much your page's layout shifts as it loads. A good user experience is a score of 0.1 or less.</p>	<p>Good - Nothing to do here</p> <p><b>0</b></p>

### Browser Timings

Redirect	0ms	Connect	28ms	Backend	28ms
TTFB	56ms	First Paint	398ms	DOM Int.	502ms
DOM Loaded	504ms	Onload	839ms	Fully Loaded	1.1s

IMPACT	AUDIT	
Med-Low	<b>Serve static assets with an efficient cache policy</b>	Potential savings of 107KB
Low	<b>Avoid an excessive DOM size</b>	778 elements
Low	<b>Eliminate render-blocking resources</b>	Potential savings of 48ms
Low	<b>Avoid enormous network payloads</b>	Total size was 1.28MB
Low	<b>Properly size images</b>	Potential savings of 19.4KB
Low	<b>Efficiently encode images</b>	Potential savings of 21.8KB
Low	<b>Ensure text remains visible during webfont load</b>	1 font found
Low	<b>Avoid long main-thread tasks</b>	3 long tasks found
Low	<b>Reduce JavaScript execution time</b>	208ms spent executing JavaScript
Low	<b>Reduce unused CSS</b>	Potential savings of 147KB
Low	<b>Serve images in next-gen formats</b>	Potential savings of 382KB
Low	<b>Reduce initial server response time</b>	Root document took 27ms
Low	<b>Avoid serving legacy JavaScript to modern browsers</b>	Potential savings of 46B
Low	<b>Defer offscreen images</b>	Potential savings of 360KB
Low	<b>Avoid large layout shifts</b>	5 elements found
Low	<b>Avoid non-composited animations</b>	3 animated elements found
Low	<b>Avoid chaining critical requests</b>	20 chains found
Low	<b>Reduce unused JavaScript</b>	Potential savings of 76.2KB
N/A	<b>Largest Contentful Paint element</b>	1 element found
N/A	<b>Minimize main-thread work</b>	Main-thread busy for 911ms
N/A	<b>Reduce the impact of third-party code</b>	Total size was 49.8KB
N/A	<b>User Timing marks and measures</b>	