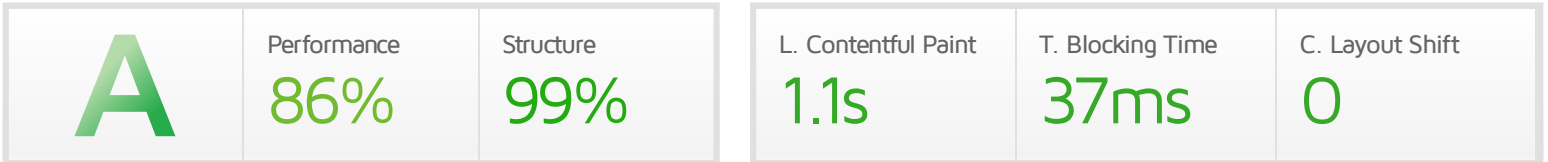




Performance Report for: <https://www.pawlettparish.org/>

Report generated: Tue, Jul 20, 2021 11:58 AM +0100
 Test Server Location: London, UK
 Using: Chrome (Desktop) 90.0.4430.212, Lighthouse 7.4.0



Top Issues

IMPACT	AUDIT	
Med-Low	Serve static assets with an efficient cache policy	Potential savings of 129KB
Low	Serve images in next-gen formats	Potential savings of 12.9KB
Low	Avoid an excessive DOM size	418 elements
Low	Avoid enormous network payloads	Total size was 1.35MB
Low	Ensure text remains visible during webfont load	3 fonts found

Page Details



Total Page Size - 1.35MB



Total Page Requests - 53



■ HTML
 ■ JS
 ■ CSS
 ■ IMG
 ■ Video
 ■ Font
 ■ Other

How does this affect me?

Today's web user expects a fast and seamless website experience. Delivering that fast experience can result in increased visits, conversions and overall happiness.

As if you didn't need more incentive, **Google has announced that they are using page speed in their ranking algorithm.**

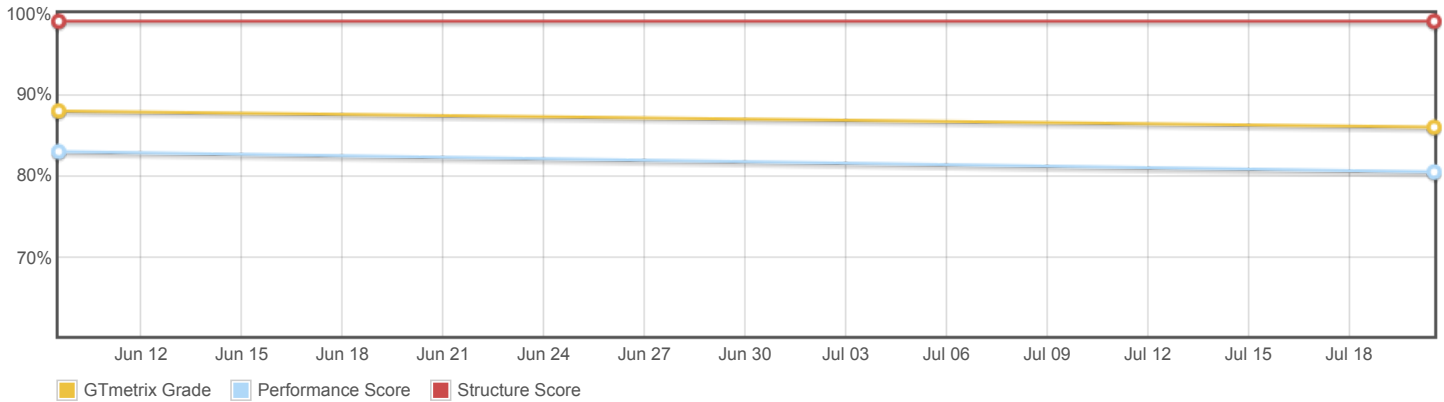
About GTmetrix

GTmetrix is developed by the good folks at **CARBON60**, a Canadian hosting company with over 25 years experience in web technology.

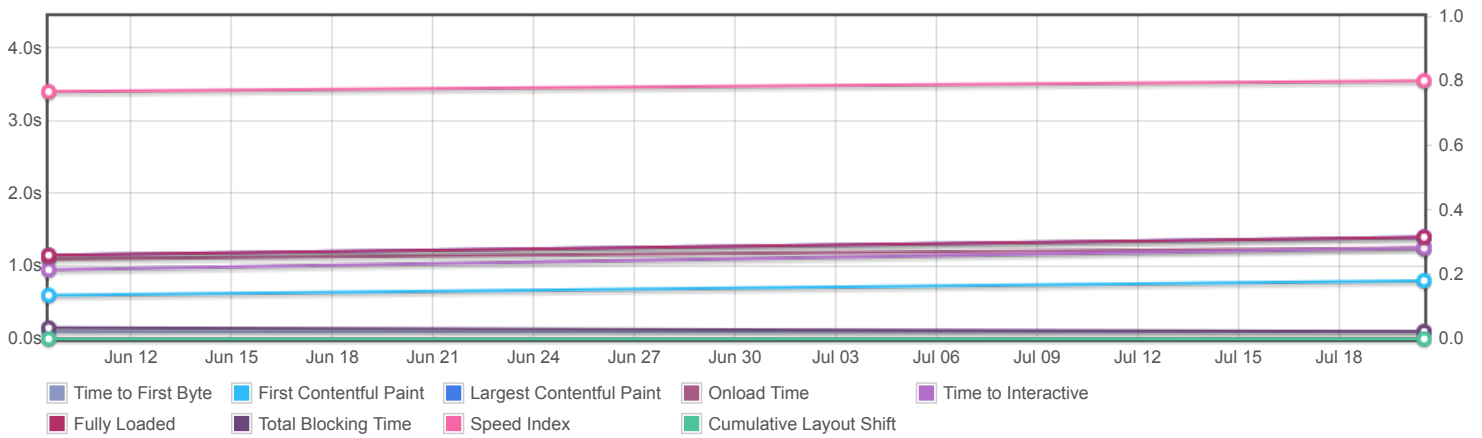


<https://carbon60.com/>

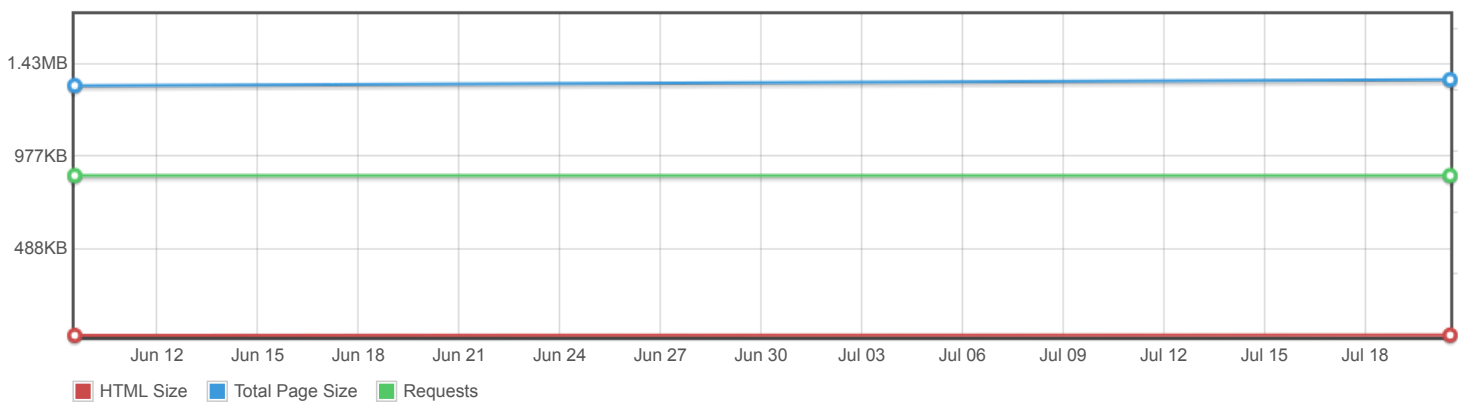
Page scores



Page metrics

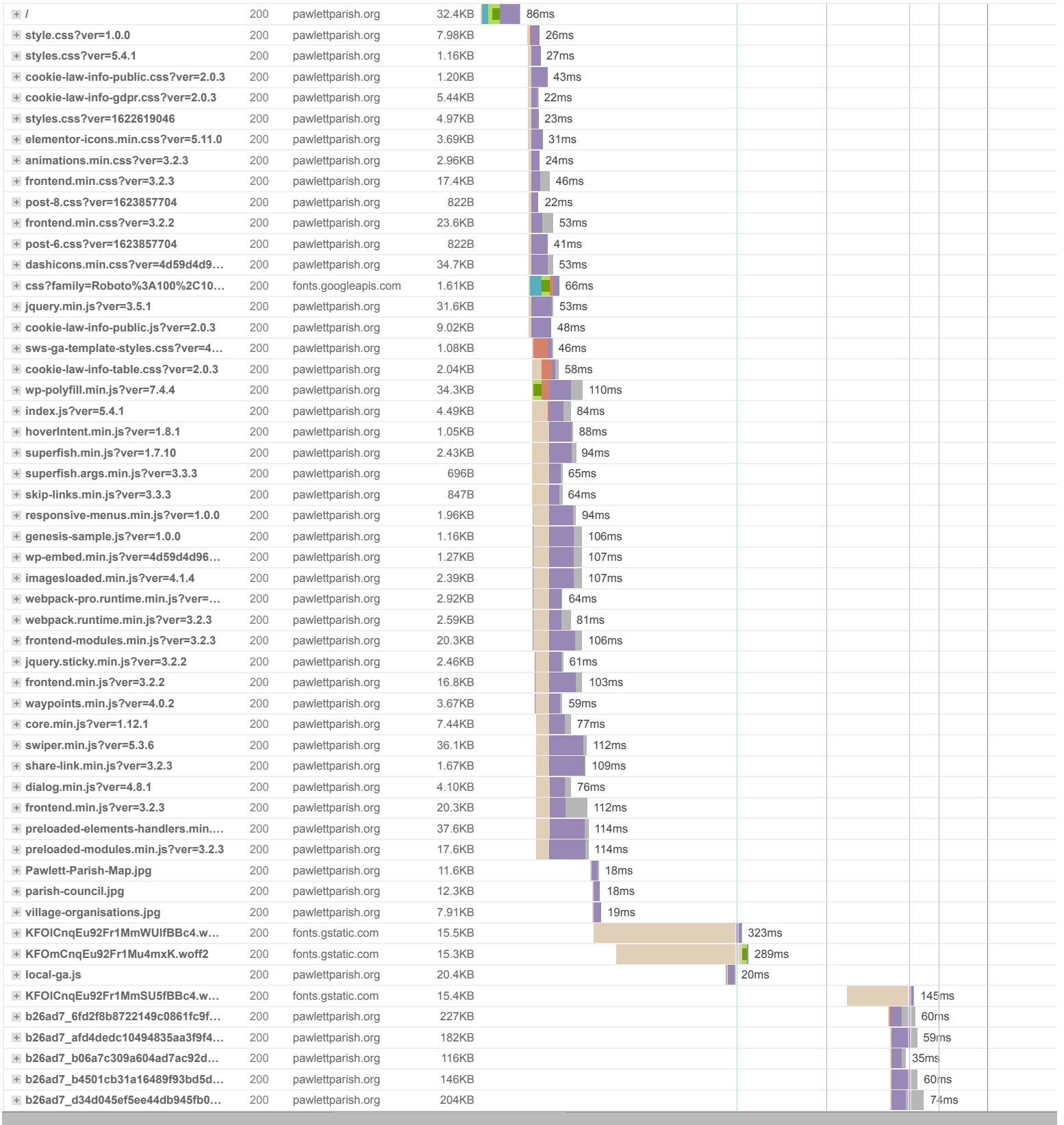


Page sizes and request counts



The waterfall chart displays the loading behaviour of your site in your selected browser. It can be used to discover simple issues such as 404's or more complex issues such as external resources blocking page rendering.

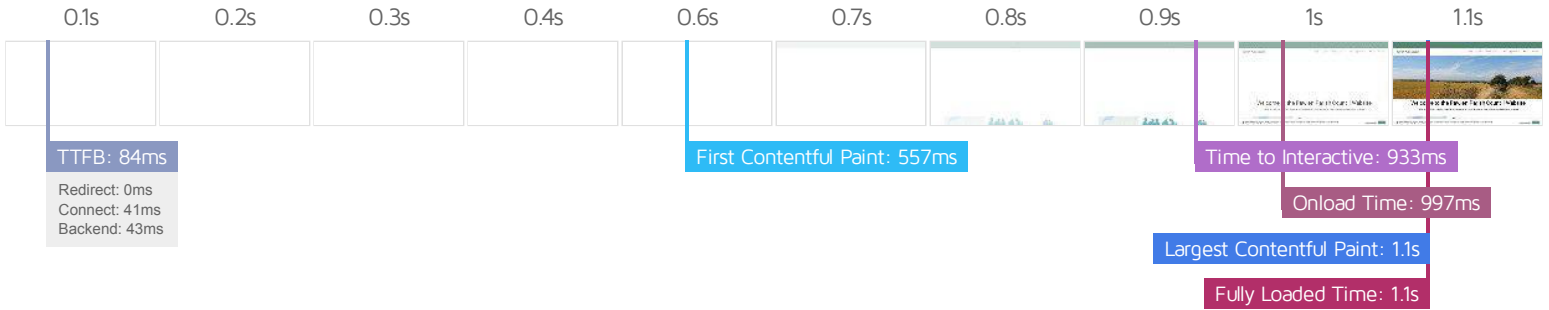
Pawlett Parish Council



53 Requests

1.35MB (2.40MB Uncompressed)

Fully Loaded 1.1s (Onload 997ms)



Performance Metrics

<p>First Contentful Paint</p> <p>How quickly content like text or images are painted onto your page. A good user experience is 0.9s or less.</p>	<p>Good - Nothing to do here</p> <p>558ms</p>	<p>Time to Interactive</p> <p>How long it takes for your page to become fully interactive. A good user experience is 2.5s or less.</p>	<p>Good - Nothing to do here</p> <p>933ms</p>
<p>Speed Index</p> <p>How quickly the contents of your page are visibly populated. A good user experience is 1.3s or less.</p>	<p>Much longer than recommended</p> <p>3.3s</p>	<p>Total Blocking Time</p> <p>How much time is blocked by scripts during your page loading process. A good user experience is 150ms or less.</p>	<p>Good - Nothing to do here</p> <p>37ms</p>
<p>Largest Contentful Paint</p> <p>How long it takes for the largest element of content (e.g. a hero image) to be painted on your page. A good user experience is 1.2s or less.</p>	<p>Good - Nothing to do here</p> <p>1.1s</p>	<p>Cumulative Layout Shift</p> <p>How much your page's layout shifts as it loads. A good user experience is a score of 0.1 or less.</p>	<p>Good - Nothing to do here</p> <p>0</p>

Browser Timings

Redirect	0ms	Connect	41ms	Backend	43ms
TTFB	84ms	First Paint	557ms	DOM Int.	753ms
DOM Loaded	753ms	Onload	997ms	Fully Loaded	1.1s

IMPACT	AUDIT	
Med-Low	Serve static assets with an efficient cache policy	Potential savings of 129KB
Low	Serve images in next-gen formats	Potential savings of 12.9KB
Low	Avoid an excessive DOM size	418 elements
Low	Avoid enormous network payloads	Total size was 1.35MB
Low	Ensure text remains visible during webfont load	3 fonts found
Low	Avoid long main-thread tasks	5 long tasks found
Low	Reduce JavaScript execution time	130ms spent executing JavaScript
Low	Reduce unused CSS	Potential savings of 74.3KB
Low	Reduce initial server response time	Root document took 43ms
Low	Avoid serving legacy JavaScript to modern browsers	Potential savings of 104B
Low	Minify CSS	Potential savings of 2.59KB
Low	Minify JavaScript	Potential savings of 2.06KB
Low	Avoid chaining critical requests	42 chains found
Low	Reduce unused JavaScript	Potential savings of 26.5KB
N/A	Largest Contentful Paint element	1 element found
N/A	Minimize main-thread work	Main-thread busy for 976ms
N/A	Reduce the impact of third-party code	Total size was 48.3KB
N/A	User Timing marks and measures	