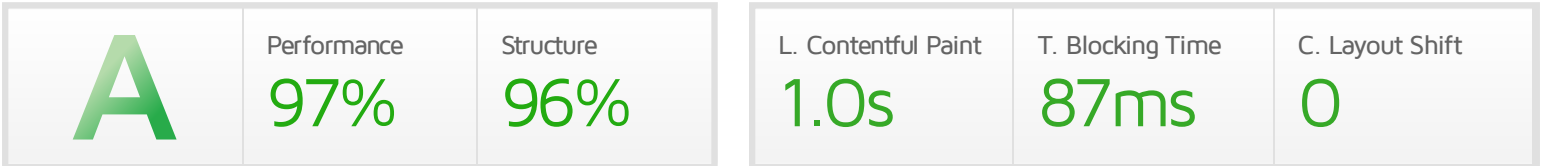


# Performance Report for: <https://www.gold-and-silver-repairs.co.uk/>

Report generated: Fri, Jul 16, 2021 4:01 PM +0100  
 Test Server Location: Vancouver, Canada  
 Using: Chrome (Desktop) 90.0.4430.212, Lighthouse 7.4.0



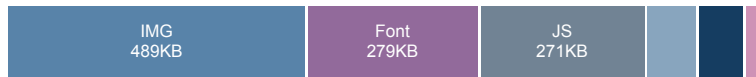
## Top Issues

IMPACT	AUDIT	
Low	<b>Serve static assets with an efficient cache policy</b>	Potential savings of 70.6KB
Low	<b>Efficiently encode images</b>	Potential savings of 62.2KB
Low	<b>Serve images in next-gen formats</b>	Potential savings of 219KB
Low	<b>Properly size images</b>	Potential savings of 26.3KB
Low	<b>Reduce unused CSS</b>	Potential savings of 71.2KB

## Page Details



Total Page Size - 1.18MB



Total Page Requests - 43



■ HTML 
 ■ JS 
 ■ CSS 
 ■ IMG 
 ■ Video 
 ■ Font 
 ■ Other

### How does this affect me?

Today's web user expects a fast and seamless website experience. Delivering that fast experience can result in increased visits, conversions and overall happiness.

As if you didn't need more incentive, **Google has announced that they are using page speed in their ranking algorithm.**

### About GTmetrix

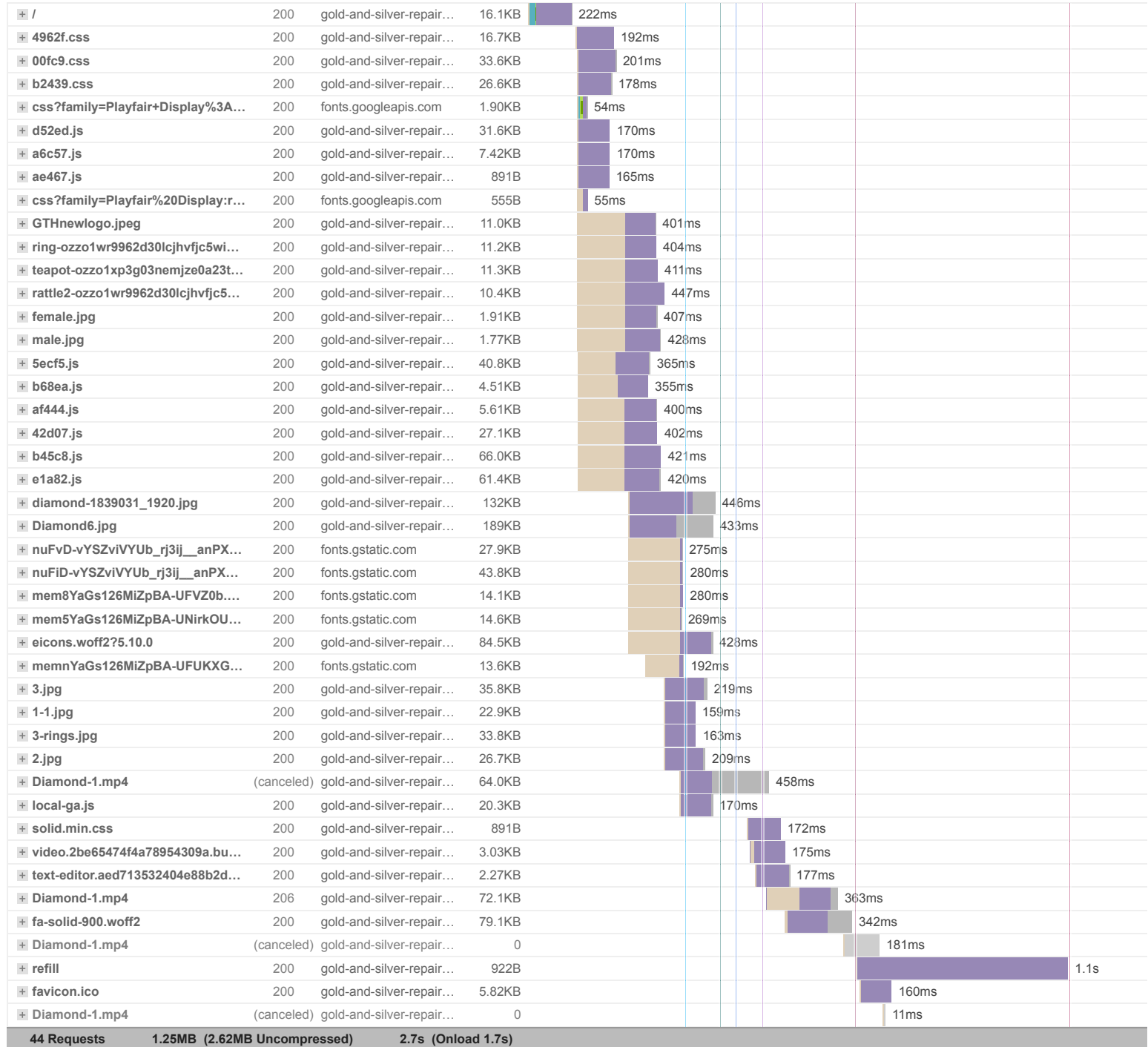
GTmetrix is developed by the good folks at **CARBON60**, a Canadian hosting company with over 25 years experience in web technology.

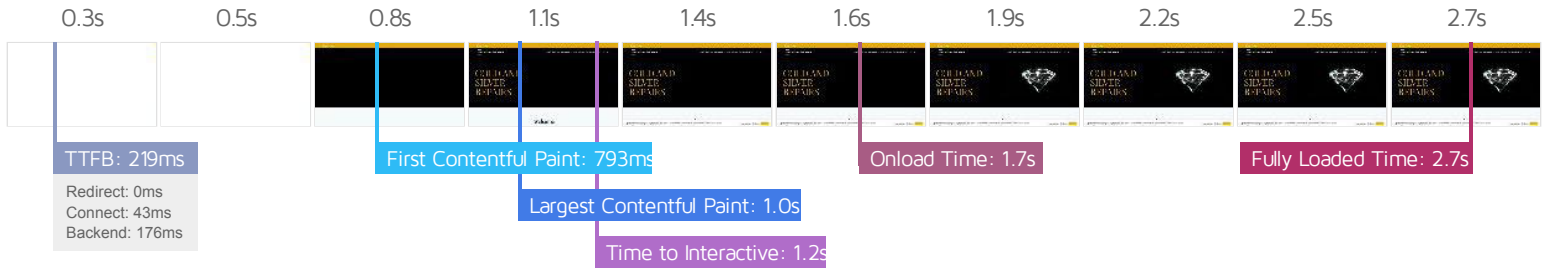


<https://carbon60.com/>

The waterfall chart displays the loading behaviour of your site in your selected browser. It can be used to discover simple issues such as 404's or more complex issues such as external resources blocking page rendering.

### GTH Gold and Silver Repairs - GTH Gold and Silver Repairs





## Performance Metrics

<h3>First Contentful Paint</h3> <p>How quickly content like text or images are painted onto your page. A good user experience is 0.9s or less.</p>	<p>Good - Nothing to do here</p> <p><b>793ms</b></p>	<h3>Time to Interactive</h3> <p>How long it takes for your page to become fully interactive. A good user experience is 2.5s or less.</p>	<p>Good - Nothing to do here</p> <p><b>1.2s</b></p>
<h3>Speed Index</h3> <p>How quickly the contents of your page are visibly populated. A good user experience is 1.3s or less.</p>	<p>Good - Nothing to do here</p> <p><b>979ms</b></p>	<h3>Total Blocking Time</h3> <p>How much time is blocked by scripts during your page loading process. A good user experience is 150ms or less.</p>	<p>Good - Nothing to do here</p> <p><b>87ms</b></p>
<h3>Largest Contentful Paint</h3> <p>How long it takes for the largest element of content (e.g. a hero image) to be painted on your page. A good user experience is 1.2s or less.</p>	<p>Good - Nothing to do here</p> <p><b>1.0s</b></p>	<h3>Cumulative Layout Shift</h3> <p>How much your page's layout shifts as it loads. A good user experience is a score of 0.1 or less.</p>	<p>Good - Nothing to do here</p> <p><b>0</b></p>

## Browser Timings

Redirect	0ms	Connect	43ms	Backend	176ms
TTFB	219ms	First Paint	793ms	DOM Int.	971ms
DOM Loaded	971ms	Onload	1.7s	Fully Loaded	2.7s

IMPACT	AUDIT	
Low	<b>Serve static assets with an efficient cache policy</b>	Potential savings of 70.6KB
Low	<b>Efficiently encode images</b>	Potential savings of 62.2KB
Low	<b>Serve images in next-gen formats</b>	Potential savings of 219KB
Low	<b>Properly size images</b>	Potential savings of 26.3KB
Low	<b>Reduce unused CSS</b>	Potential savings of 71.2KB
Low	<b>Reduce unused JavaScript</b>	Potential savings of 126KB
Low	<b>Avoid an excessive DOM size</b>	499 elements
Low	<b>Avoid enormous network payloads</b>	Total size was 1.19MB
Low	<b>Ensure text remains visible during webfont load</b>	5 fonts found
Low	<b>Avoid long main-thread tasks</b>	6 long tasks found
Low	<b>Reduce JavaScript execution time</b>	179ms spent executing JavaScript
Low	<b>Reduce initial server response time</b>	Root document took 175ms
Low	<b>Avoid serving legacy JavaScript to modern browsers</b>	Potential savings of 98B
Low	<b>Avoid large layout shifts</b>	1 element found
Low	<b>Avoid non-composited animations</b>	3 animated elements found
Low	<b>Avoid chaining critical requests</b>	17 chains found
N/A	<b>Largest Contentful Paint element</b>	1 element found
N/A	<b>Minimize main-thread work</b>	Main-thread busy for 933ms
N/A	<b>Reduce the impact of third-party code</b>	Total size was 117KB
N/A	<b>User Timing marks and measures</b>	