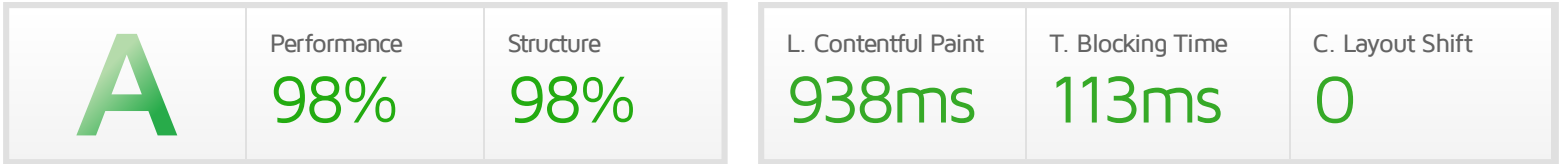




Performance Report for: <https://water2u.uk/>

Report generated: Tue, Feb 8, 2022 3:40 PM +0000
 Test Server Location: London, UK
 Using: Chrome (Desktop) 90.0.4430.212, Lighthouse 8.3.0



Top Issues

IMPACT	AUDIT	
Low	Serve static assets with an efficient cache policy	Potential savings of 85.4KB
Low	Eliminate render-blocking resources	Potential savings of 74ms
Low	Avoid an excessive DOM size	649 elements
Low	Reduce unused CSS	Potential savings of 103KB
Low	Avoid enormous network payloads	Total size was 1.16MB

Page Details



Total Page Size - 1.16MB



Total Page Requests - 50



■ HTML
 ■ JS
 ■ CSS
 ■ IMG
 ■ Video
 ■ Font
 ■ Other

How does this affect me?

Today's web user expects a fast and seamless website experience. Delivering that fast experience can result in increased visits, conversions and overall happiness.

As if you didn't need more incentive, **Google has announced that they are using page speed in their ranking algorithm.**

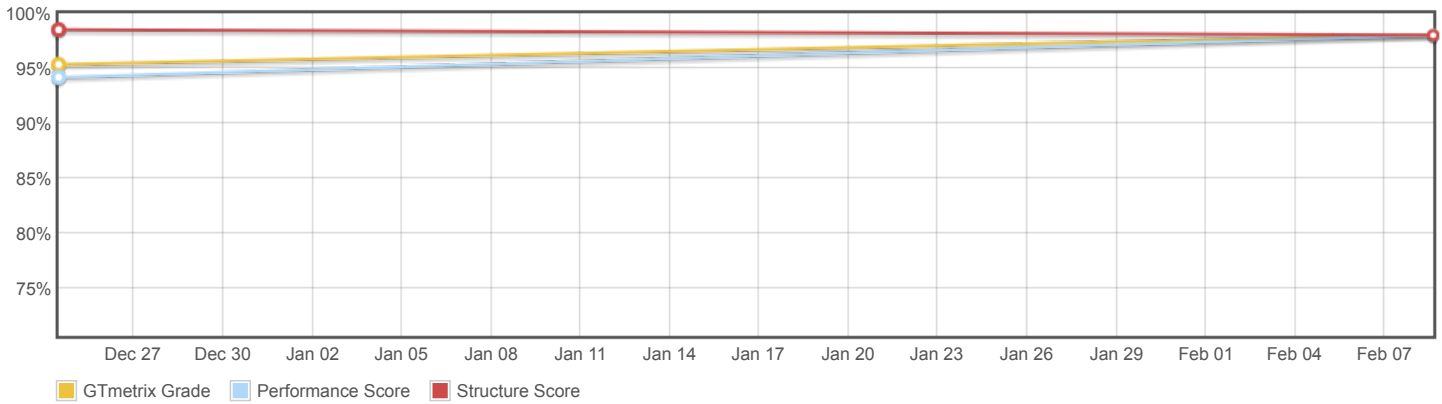
About GTmetrix



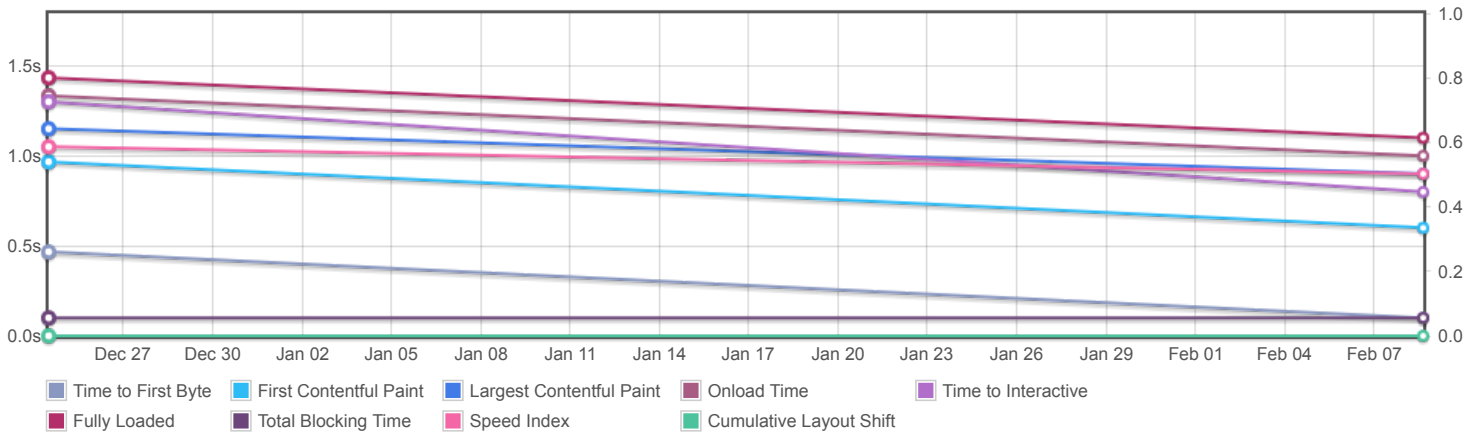
GTmetrix is developed by the good folks at **Carbon60**, a Canadian hosting company with over 26 years experience in web technology.

<https://carbon60.com/>

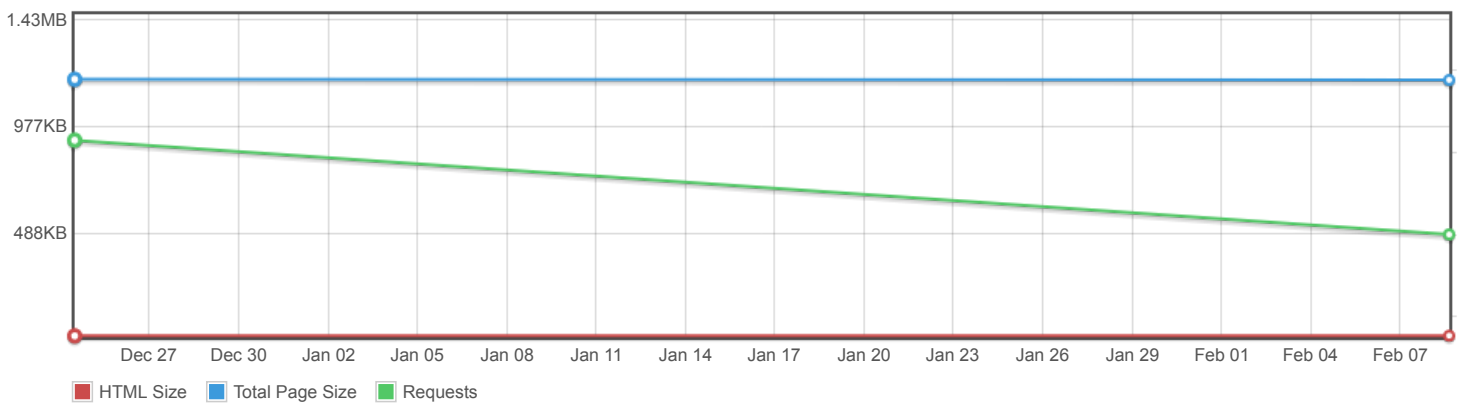
Page scores



Page metrics

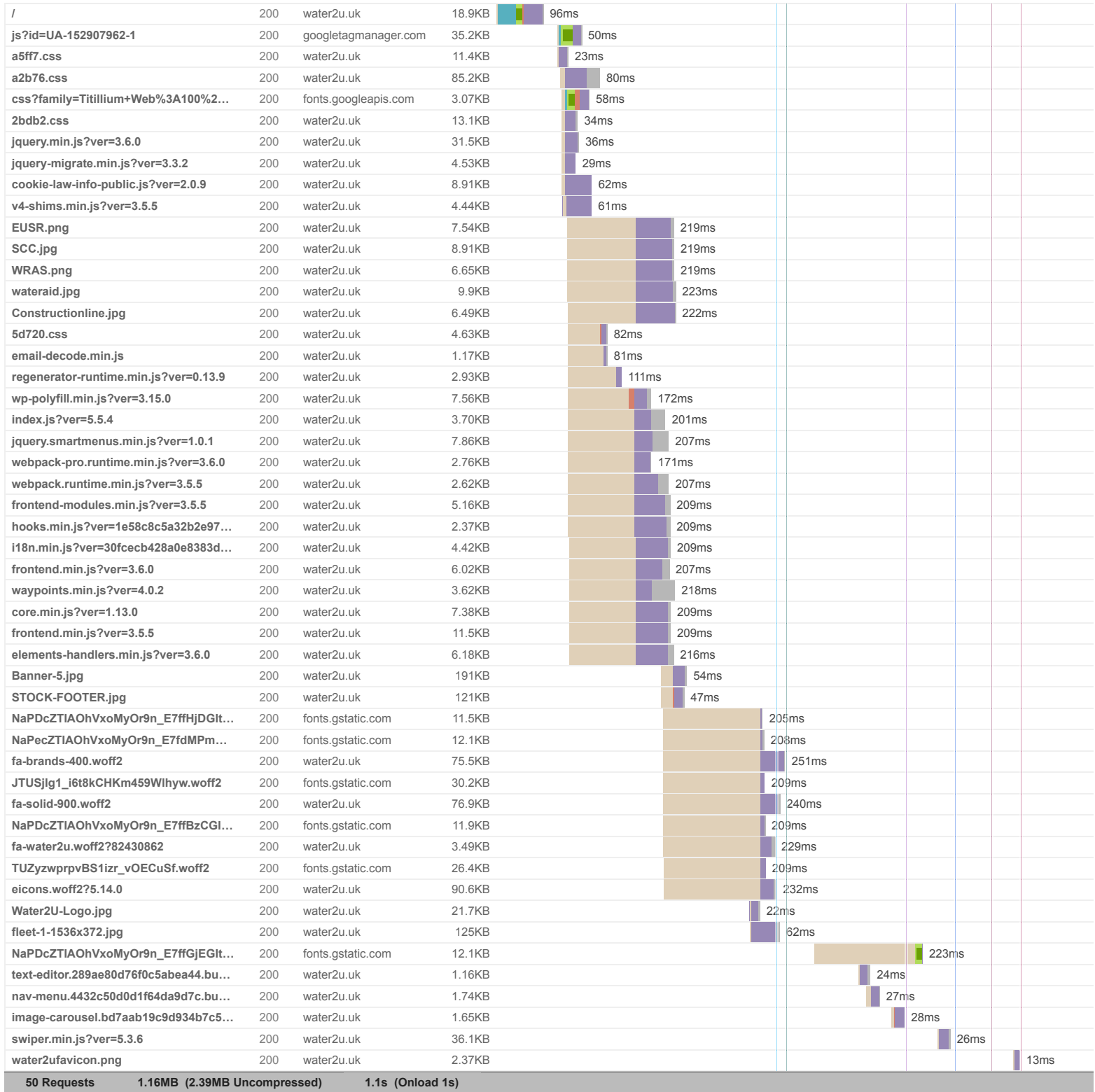


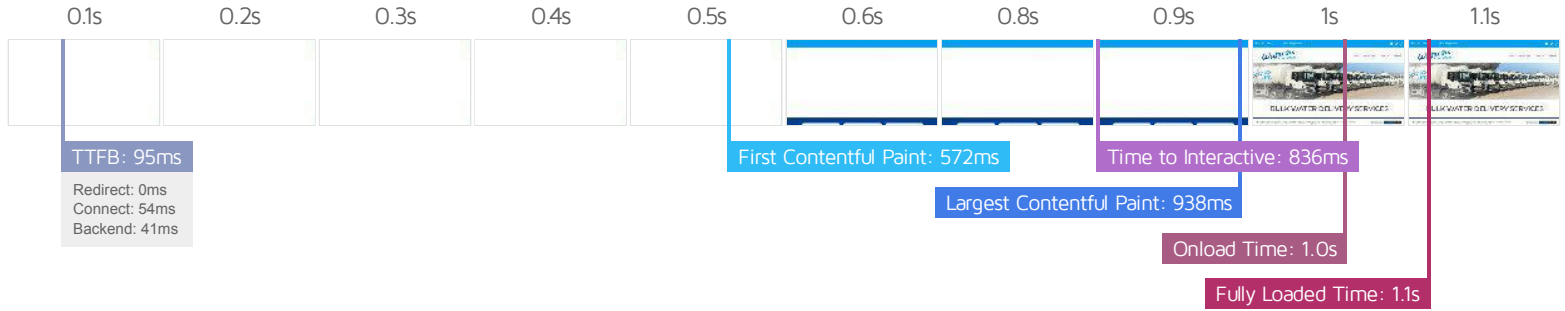
Page sizes and request counts



The waterfall chart displays the loading behaviour of your site in your selected browser. It can be used to discover simple issues such as 404's or more complex issues such as external resources blocking page rendering.

Bulk Water Delivery Services - Water2U





Performance Metrics

<p>First Contentful Paint</p> <p>How quickly content like text or images are painted onto your page. A good user experience is 0.9s or less.</p>	<p>Good - Nothing to do here</p> <p>572ms</p>	<p>Time to Interactive</p> <p>How long it takes for your page to become fully interactive. A good user experience is 2.5s or less.</p>	<p>Good - Nothing to do here</p> <p>836ms</p>
<p>Speed Index</p> <p>How quickly the contents of your page are visibly populated. A good user experience is 1.3s or less.</p>	<p>Good - Nothing to do here</p> <p>852ms</p>	<p>Total Blocking Time</p> <p>How much time is blocked by scripts during your page loading process. A good user experience is 150ms or less.</p>	<p>Good - Nothing to do here</p> <p>113ms</p>
<p>Largest Contentful Paint</p> <p>How long it takes for the largest element of content (e.g. a hero image) to be painted on your page. A good user experience is 1.2s or less.</p>	<p>Good - Nothing to do here</p> <p>938ms</p>	<p>Cumulative Layout Shift</p> <p>How much your page's layout shifts as it loads. A good user experience is a score of 0.1 or less.</p>	<p>Good - Nothing to do here</p> <p>0</p>

Browser Timings

Redirect	0ms	Connect	54ms	Backend	41ms
TTFB	95ms	First Paint	572ms	DOM Int.	590ms
DOM Loaded	592ms	Onload	1.0s	Fully Loaded	1.1s

IMPACT	AUDIT	
Low	Serve static assets with an efficient cache policy	Potential savings of 85.4KB
Low	Eliminate render-blocking resources	Potential savings of 74ms
Low	Avoid an excessive DOM size	649 elements
Low	Reduce unused CSS	Potential savings of 103KB
Low	Avoid enormous network payloads	Total size was 1.16MB
Low	Properly size images	Potential savings of 26.0KB
Low	Efficiently encode images	Potential savings of 10.6KB
Low	Ensure text remains visible during webfont load	8 fonts found
Low	Avoid long main-thread tasks	3 long tasks found
Low	Reduce JavaScript execution time	196ms spent executing JavaScript
Low	Serve images in next-gen formats	Potential savings of 222KB
Low	Reduce initial server response time	Root document took 40ms
Low	Avoid large layout shifts	1 element found
Low	Avoid non-composited animations	1 animated element found
Low	Minify JavaScript	Potential savings of 2.02KB
Low	Avoid chaining critical requests	31 chains found
Low	Reduce unused JavaScript	Potential savings of 23.5KB
N/A	Largest Contentful Paint element	1 element found
N/A	Minimize main-thread work	Main-thread busy for 962ms
N/A	Reduce the impact of third-party code	Total size was 144KB
N/A	User Timing marks and measures	