

Performance Report for: <https://rgtreeservices.co.uk/>

Report generated: Mon, Nov 7, 2022 2:37 PM +0000
 Test Server Location: London, UK
 Using: Chrome (Desktop) 103.0.5060.134, Lighthouse 9.6.4

| | | | | | |
|----------|-------------|------------|---------------------|------------------|-----------------|
| A | Performance | Structure | L. Contentful Paint | T. Blocking Time | C. Layout Shift |
| | 93% | 95% | 925ms | 170ms | 0 |

Top Issues

| IMPACT | AUDIT | |
|--------|--|------------------------------|
| Med | Serve static assets with an efficient cache policy | Potential savings of 848KB |
| Low | Use passive listeners to improve scrolling performance | 1 event listener not passive |
| Low | Avoid long main-thread tasks <small>TBT</small> | 6 long tasks found |
| Low | Avoid an excessive DOM size <small>TBT</small> | 707 elements |
| Low | Eliminate render-blocking resources <small>FCP LCP</small> | Potential savings of 13ms |

Page Details



Total Page Size - 1.03MB



Total Page Requests - 41



■ HTML
 ■ JS
 ■ CSS
 ■ IMG
 ■ Video
 ■ Font
 ■ Other

How does this affect me?

Today's web user expects a fast and seamless website experience. Delivering that fast experience can result in increased visits, conversions and overall happiness.

As if you didn't need more incentive, **Google has announced that they are using page speed in their ranking algorithm.**

About GTmetrix

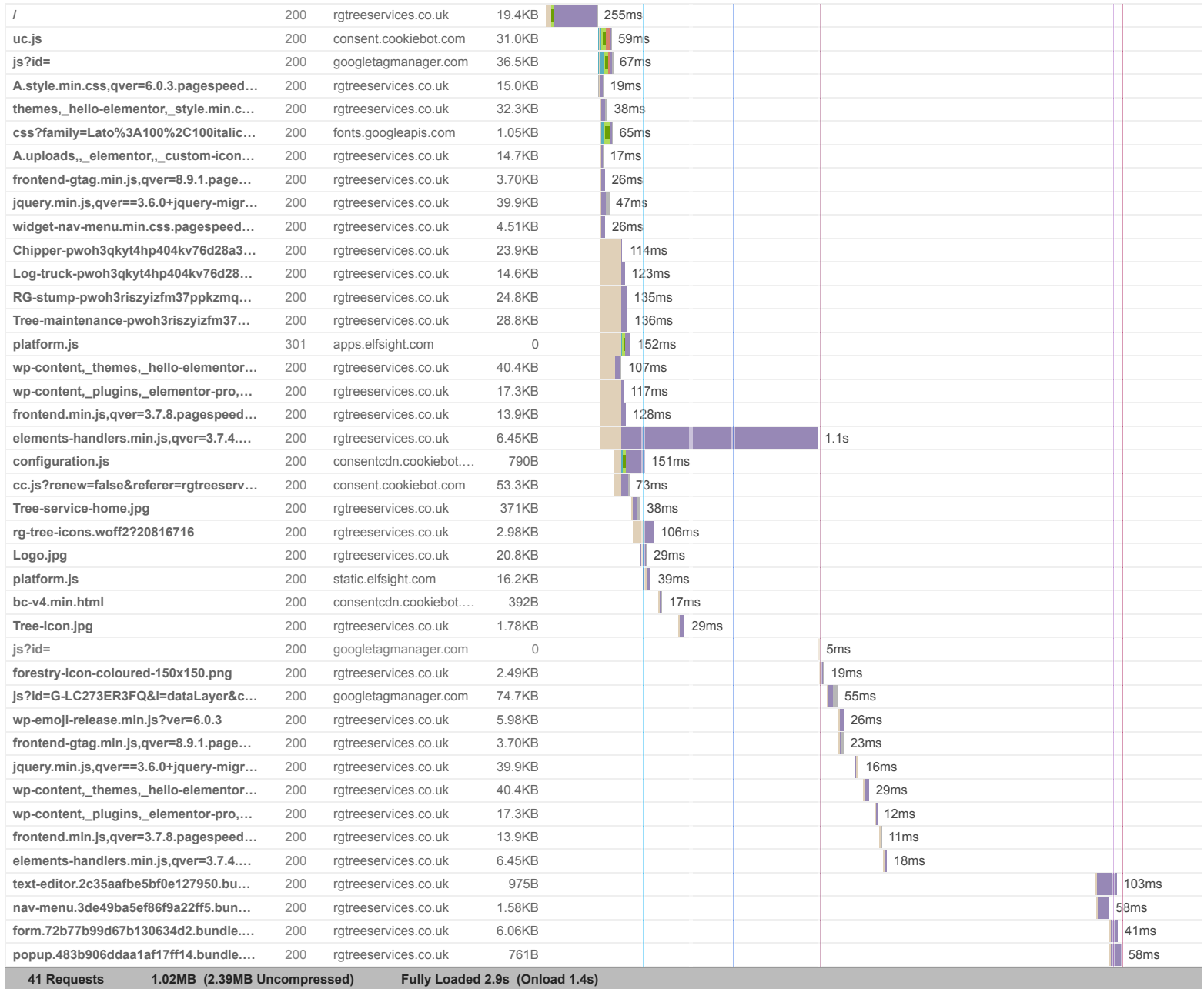


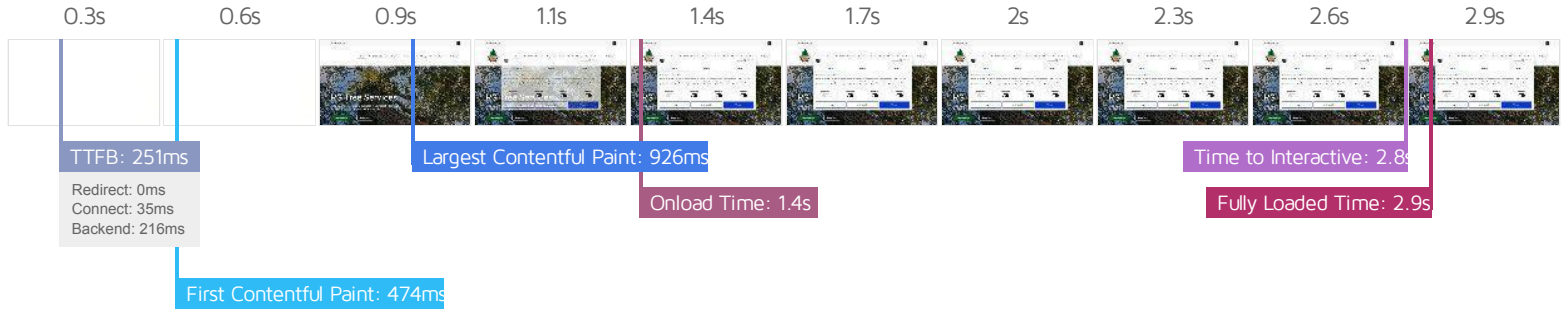
GTmetrix is developed by the good folks at **Carbon60**, a Canadian hosting company with over 26 years experience in web technology.

<https://carbon60.com/>

The waterfall chart displays the loading behaviour of your site in your selected browser. It can be used to discover simple issues such as 404's or more complex issues such as external resources blocking page rendering.

Tree Surgery & Woodland Management - RG Tree Services





Performance Metrics

| | | | |
|--|--|---|---|
| <p>First Contentful Paint</p> <p>How quickly content like text or images are painted onto your page. A good user experience is 0.9s or less.</p> | <p>Good - Nothing to do here</p> <p>474ms</p> | <p>Time to Interactive</p> <p>How long it takes for your page to become fully interactive. A good user experience is 2.5s or less.</p> | <p>OK, but consider improvement</p> <p>2.8s</p> |
| <p>Speed Index</p> <p>How quickly the contents of your page are visibly populated. A good user experience is 1.3s or less.</p> | <p>Good - Nothing to do here</p> <p>836ms</p> | <p>Total Blocking Time</p> <p>How much time is blocked by scripts during your page loading process. A good user experience is 150ms or less.</p> | <p>OK, but consider improvement</p> <p>170ms</p> |
| <p>Largest Contentful Paint</p> <p>How long it takes for the largest element of content (e.g. a hero image) to be painted on your page. A good user experience is 1.2s or less.</p> | <p>Good - Nothing to do here</p> <p>925ms</p> | <p>Cumulative Layout Shift</p> <p>How much your page's layout shifts as it loads. A good user experience is a score of 0.1 or less.</p> | <p>Good - Nothing to do here</p> <p>0</p> |

Browser Timings

| | | | | | |
|------------|-------|-------------|-------|--------------|-------|
| Redirect | 0ms | Connect | 35ms | Backend | 216ms |
| TTFB | 251ms | First Paint | 407ms | DOM Int. | 711ms |
| DOM Loaded | 712ms | Onload | 1.4s | Fully Loaded | 2.9s |

| IMPACT | AUDIT | |
|--------|---|---|
| Med | Serve static assets with an efficient cache policy | Potential savings of 848KB |
| Low | Use passive listeners to improve scrolling performance | 1 event listener not passive |
| Low | Avoid long main-thread tasks <small>TBT</small> | 6 long tasks found |
| Low | Avoid an excessive DOM size <small>TBT</small> | 707 elements |
| Low | Eliminate render-blocking resources <small>FCP LCP</small> | Potential savings of 13ms |
| Low | Avoid chaining critical requests <small>FCP LCP</small> | 12 chains found |
| Low | Avoid enormous network payloads <small>LCP</small> | Total size was 1.03MB |
| Low | Efficiently encode images | Potential savings of 15.0KB |
| Low | Ensure text remains visible during webfont load <small>FCP LCP</small> | 1 font found |
| Low | Reduce JavaScript execution time <small>TBT</small> | 373ms spent executing JavaScript |
| Low | Reduce unused CSS <small>FCP LCP</small> | Potential savings of 57.4KB |
| Low | Serve images in next-gen formats | Potential savings of 103KB |
| Low | Reduce initial server response time <small>FCP LCP</small> | Root document took 216ms |
| Low | Avoid serving legacy JavaScript to modern browsers <small>TBT</small> | Potential savings of 60B |
| Low | Reduce unused JavaScript <small>LCP</small> | Potential savings of 58.0KB |
| N/A | Largest Contentful Paint element <small>LCP</small> | 1 element found |
| N/A | Minimize main-thread work <small>TBT</small> | Main-thread busy for 967ms |
| N/A | Reduce the impact of third-party code <small>TBT</small> | Third-party code blocked the main thread for 43ms |
| N/A | Avoid large layout shifts <small>CLS</small> | |
| N/A | User Timing marks and measures | |