



# Performance Report for: <https://langportheritage.org.uk/>

Report generated: Mon, Jul 19, 2021 1:57 PM +0100  
 Test Server Location: London, UK  
 Using: Chrome (Desktop) 90.0.4430.212, Lighthouse 7.4.0

<b>A</b>	Performance	Structure	L. Contentful Paint	T. Blocking Time	C. Layout Shift
	<b>94%</b>	<b>99%</b>	<b>1.1s</b>	<b>139ms</b>	<b>0</b>

## Top Issues

IMPACT	AUDIT	
Low	<b>Avoid an excessive DOM size</b>	993 elements
Low	<b>Serve static assets with an efficient cache policy</b>	Potential savings of 30.5KB
Low	<b>Serve images in next-gen formats</b>	Potential savings of 36.1KB
Low	<b>Avoid enormous network payloads</b>	Total size was 937KB
Low	<b>Properly size images</b>	Potential savings of 97.3KB

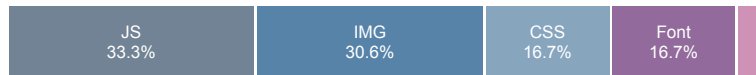
## Page Details



Total Page Size - 937KB



Total Page Requests - 36



■ HTML 
 ■ JS 
 ■ CSS 
 ■ IMG 
 ■ Video 
 ■ Font 
 ■ Other

### How does this affect me?

Today's web user expects a fast and seamless website experience. Delivering that fast experience can result in increased visits, conversions and overall happiness.

As if you didn't need more incentive, **Google has announced that they are using page speed in their ranking algorithm.**

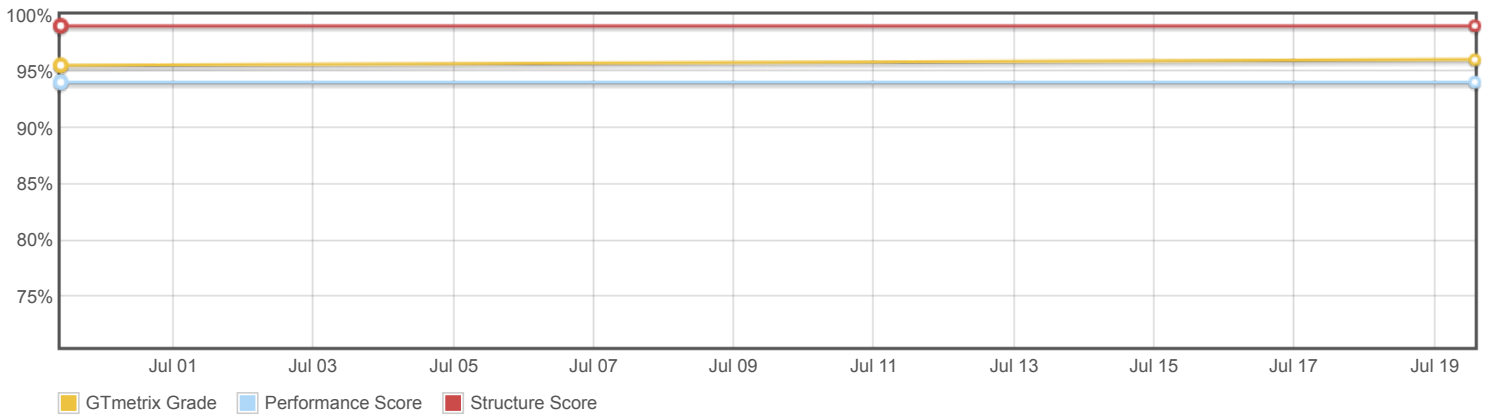
### About GTmetrix

GTmetrix is developed by the good folks at **CARBON60**, a Canadian hosting company with over 25 years experience in web technology.

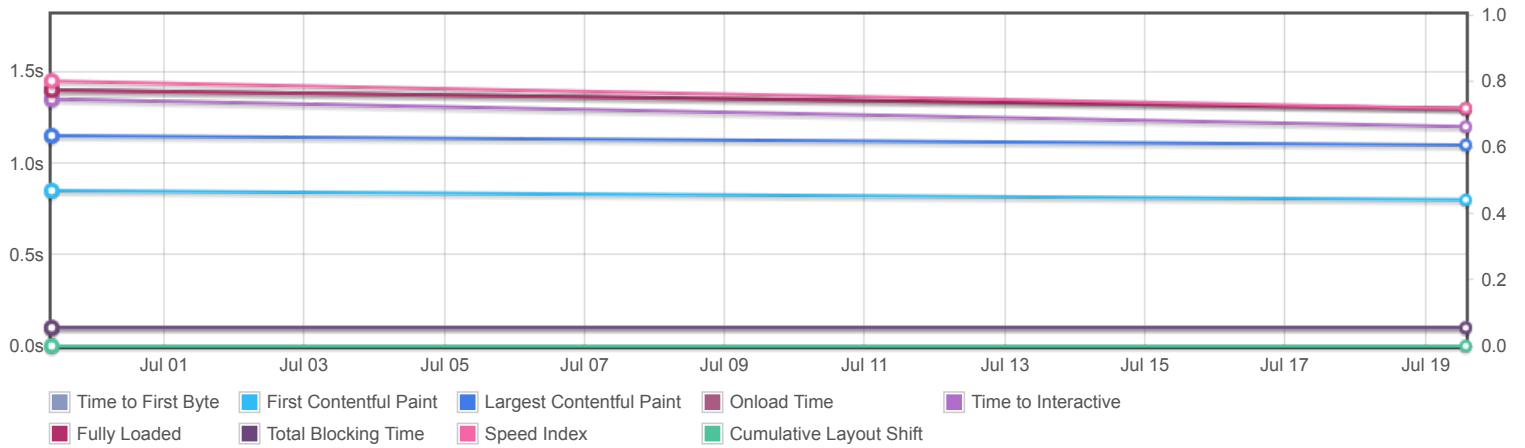


<https://carbon60.com/>

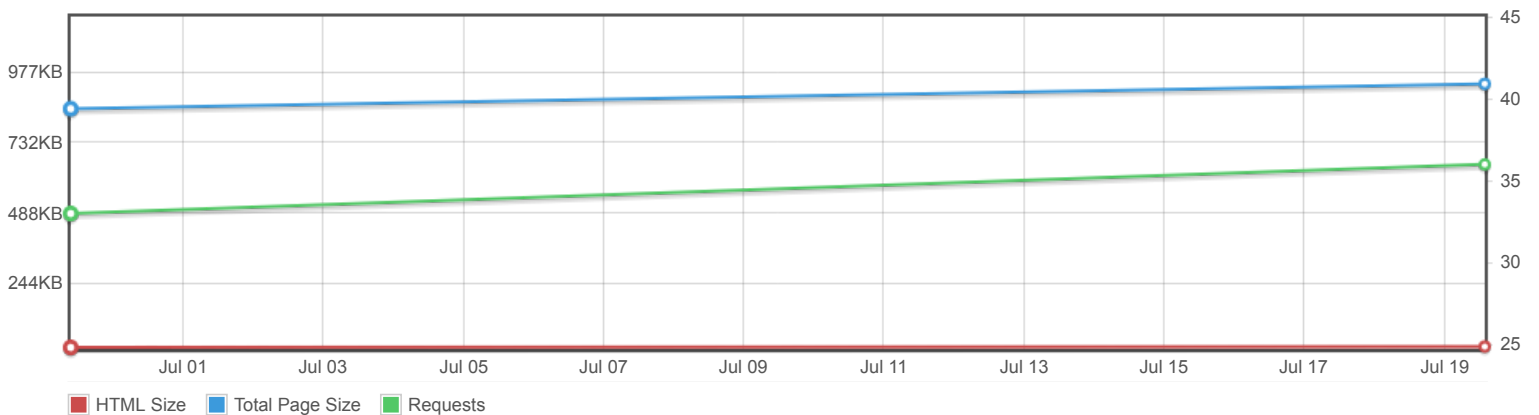
### Page scores



### Page metrics

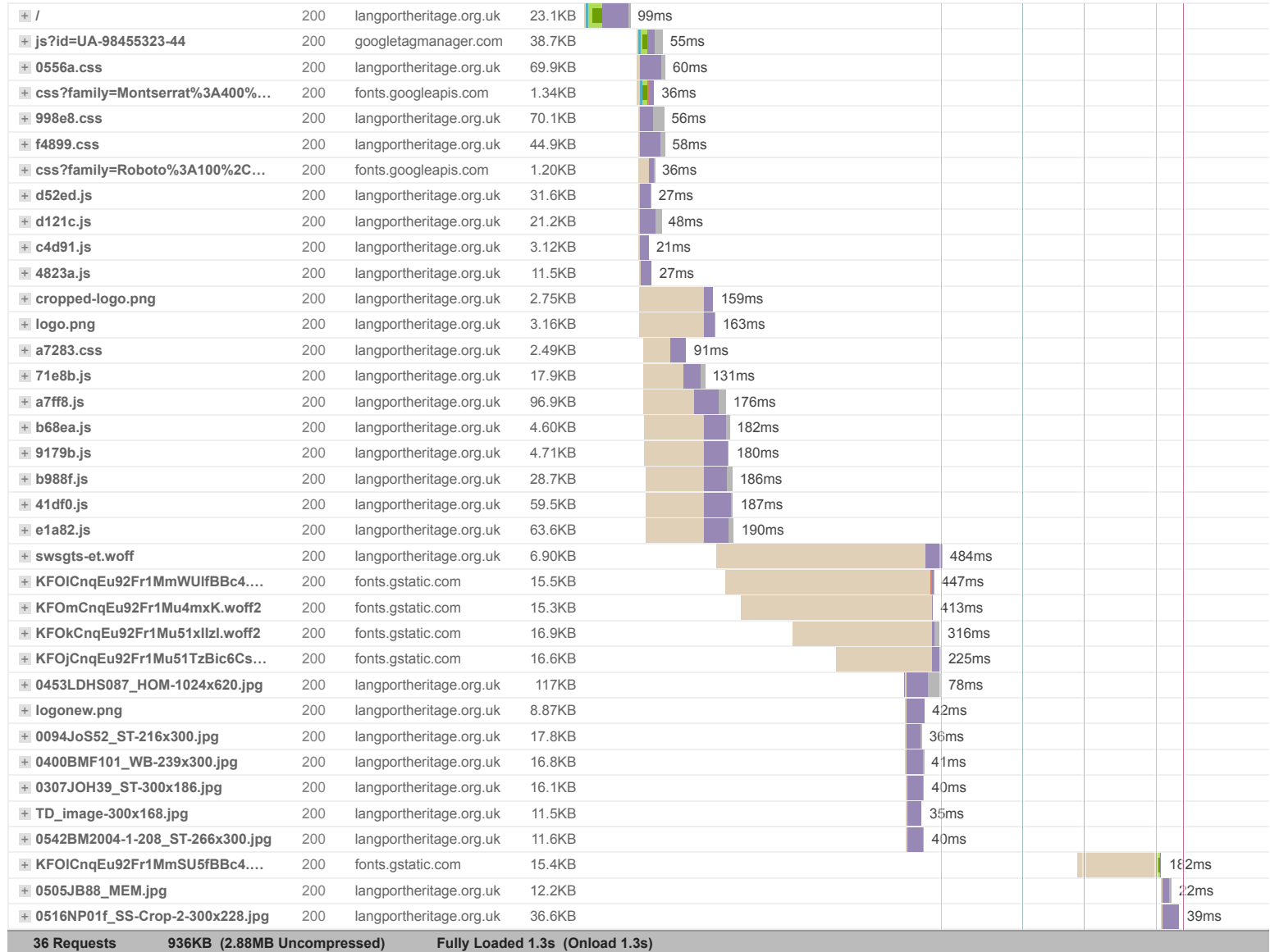


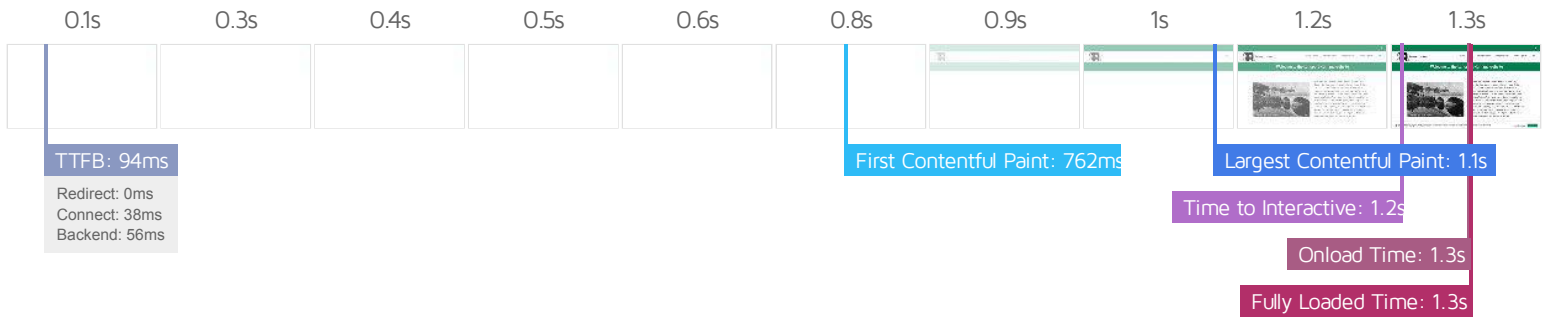
### Page sizes and request counts



The waterfall chart displays the loading behaviour of your site in your selected browser. It can be used to discover simple issues such as 404's or more complex issues such as external resources blocking page rendering.

## Home - Langport Heritage





## Performance Metrics

<h3>First Contentful Paint</h3> <p>How quickly content like text or images are painted onto your page. A good user experience is 0.9s or less.</p>	<p>Good - Nothing to do here</p> <p><b>762ms</b></p>	<h3>Time to Interactive</h3> <p>How long it takes for your page to become fully interactive. A good user experience is 2.5s or less.</p>	<p>Good - Nothing to do here</p> <p><b>1.2s</b></p>
<h3>Speed Index</h3> <p>How quickly the contents of your page are visibly populated. A good user experience is 1.3s or less.</p>	<p>Good - Nothing to do here</p> <p><b>1.3s</b></p>	<h3>Total Blocking Time</h3> <p>How much time is blocked by scripts during your page loading process. A good user experience is 150ms or less.</p>	<p>Good - Nothing to do here</p> <p><b>139ms</b></p>
<h3>Largest Contentful Paint</h3> <p>How long it takes for the largest element of content (e.g. a hero image) to be painted on your page. A good user experience is 1.2s or less.</p>	<p>Good - Nothing to do here</p> <p><b>1.1s</b></p>	<h3>Cumulative Layout Shift</h3> <p>How much your page's layout shifts as it loads. A good user experience is a score of 0.1 or less.</p>	<p>Good - Nothing to do here</p> <p><b>0</b></p>

## Browser Timings

Redirect	0ms	Connect	38ms	Backend	56ms
TTFB	94ms	First Paint	762ms	DOM Int.	936ms
DOM Loaded	937ms	Onload	1.3s	Fully Loaded	1.3s

IMPACT	AUDIT	
Low	<b>Avoid an excessive DOM size</b>	993 elements
Low	<b>Serve static assets with an efficient cache policy</b>	Potential savings of 30.5KB
Low	<b>Serve images in next-gen formats</b>	Potential savings of 36.1KB
Low	<b>Avoid enormous network payloads</b>	Total size was 937KB
Low	<b>Properly size images</b>	Potential savings of 97.3KB
Low	<b>Efficiently encode images</b>	Potential savings of 22.0KB
Low	<b>Ensure text remains visible during webfont load</b>	6 fonts found
Low	<b>Avoid long main-thread tasks</b>	4 long tasks found
Low	<b>Reduce JavaScript execution time</b>	229ms spent executing JavaScript
Low	<b>Reduce unused CSS</b>	Potential savings of 178KB
Low	<b>Reduce initial server response time</b>	Root document took 55ms
Low	<b>Avoid serving legacy JavaScript to modern browsers</b>	Potential savings of 98B
Low	<b>Defer offscreen images</b>	Potential savings of 2.17KB
Low	<b>Minify JavaScript</b>	Potential savings of 15.5KB
Low	<b>Avoid chaining critical requests</b>	21 chains found
Low	<b>Reduce unused JavaScript</b>	Potential savings of 182KB
N/A	<b>Largest Contentful Paint element</b>	1 element found
N/A	<b>Minimize main-thread work</b>	Main-thread busy for 1.2s
N/A	<b>Reduce the impact of third-party code</b>	Total size was 122KB
N/A	<b>User Timing marks and measures</b>	