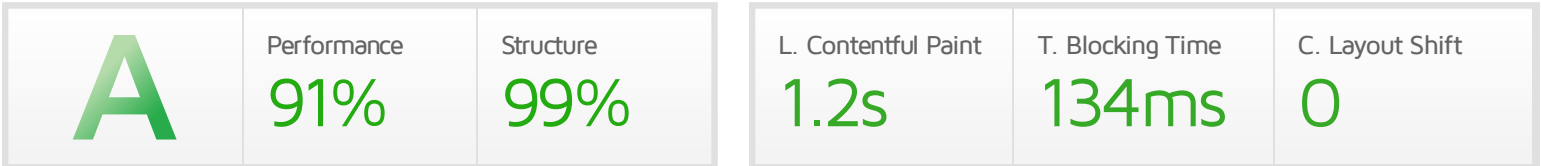


Performance Report for: <https://atdhouseclearances.co.uk/>

Report generated: Thu, Jul 15, 2021 11:17 AM +0100
 Test Server Location: London, UK
 Using: Chrome (Desktop) 90.0.4430.212, Lighthouse 7.4.0



Top Issues

IMPACT	AUDIT	
Low	Serve static assets with an efficient cache policy	Potential savings of 50.7KB
Low	Avoid long main-thread tasks	5 long tasks found
Low	Avoid chaining critical requests	33 chains found
Low	Serve images in next-gen formats	Potential savings of 8.61KB
Low	Avoid an excessive DOM size	508 elements

Page Details



Total Page Size - 796KB



Total Page Requests - 48



How does this affect me?

Today's web user expects a fast and seamless website experience. Delivering that fast experience can result in increased visits, conversions and overall happiness.

As if you didn't need more incentive, **Google has announced that they are using page speed in their ranking algorithm.**

About GTmetrix

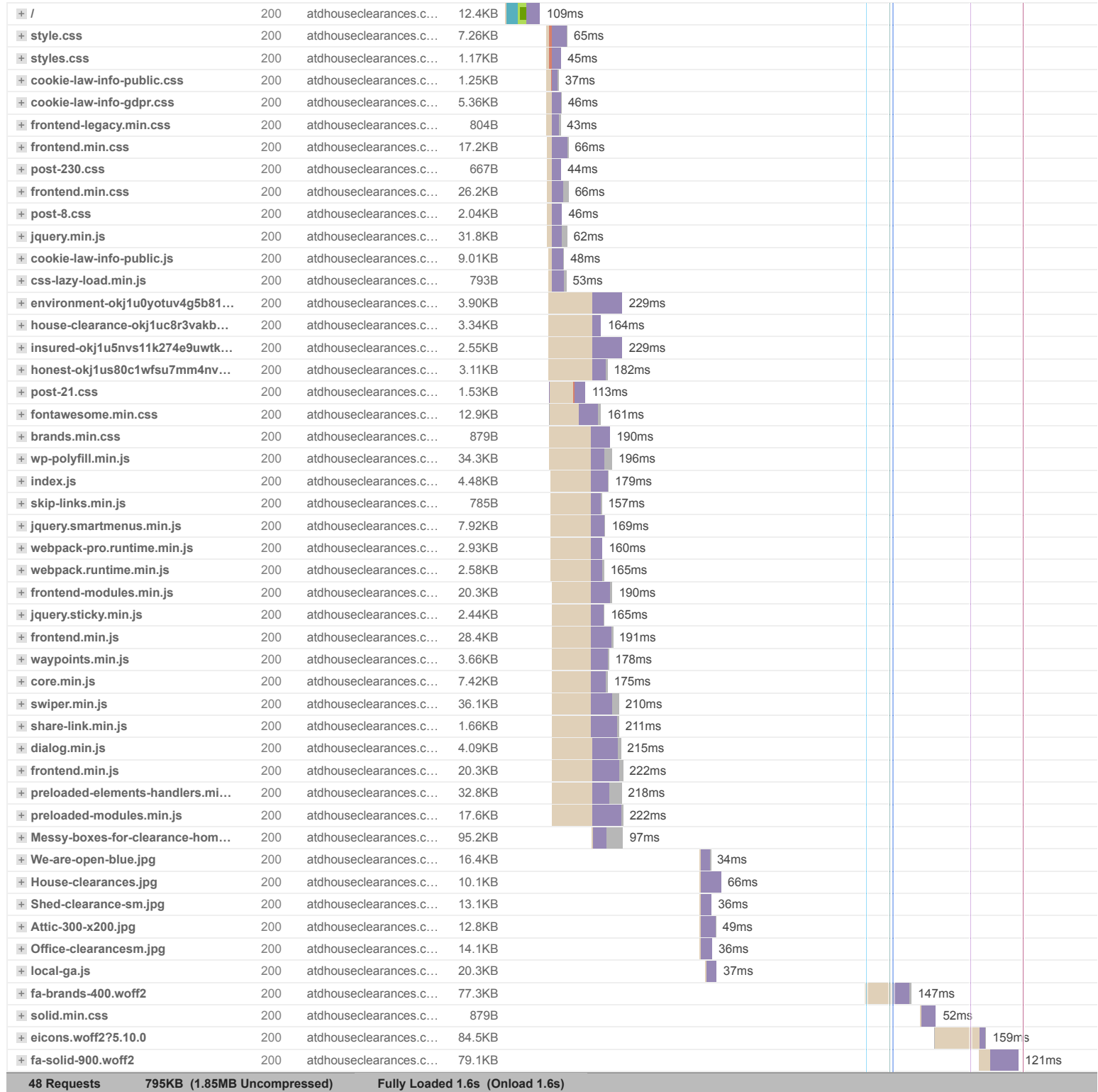
GTmetrix is developed by the good folks at **CARBON60**, a Canadian hosting company with over 25 years experience in web technology.

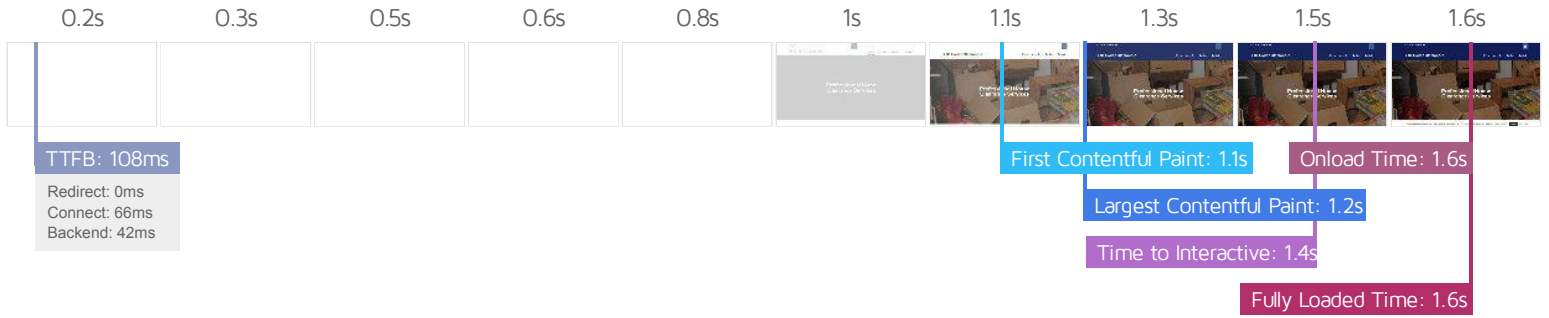


<https://carbon60.com/>

The waterfall chart displays the loading behaviour of your site in your selected browser. It can be used to discover simple issues such as 404's or more complex issues such as external resources blocking page rendering.

House Clearance Service - ATD House Clearances





Performance Metrics

<p>First Contentful Paint</p> <p>How quickly content like text or images are painted onto your page. A good user experience is 0.9s or less.</p>	<p>OK, but consider improvement</p> <p>1.1s</p>	<p>Time to Interactive</p> <p>How long it takes for your page to become fully interactive. A good user experience is 2.5s or less.</p>	<p>Good - Nothing to do here</p> <p>1.5s</p>
<p>Speed Index</p> <p>How quickly the contents of your page are visibly populated. A good user experience is 1.3s or less.</p>	<p>Good - Nothing to do here</p> <p>1.3s</p>	<p>Total Blocking Time</p> <p>How much time is blocked by scripts during your page loading process. A good user experience is 150ms or less.</p>	<p>Good - Nothing to do here</p> <p>134ms</p>
<p>Largest Contentful Paint</p> <p>How long it takes for the largest element of content (e.g. a hero image) to be painted on your page. A good user experience is 1.2s or less.</p>	<p>Good - Nothing to do here</p> <p>1.2s</p>	<p>Cumulative Layout Shift</p> <p>How much your page's layout shifts as it loads. A good user experience is a score of 0.1 or less.</p>	<p>Good - Nothing to do here</p> <p>0</p>

Browser Timings

Redirect	0ms	Connect	66ms	Backend	42ms
TTFB	108ms	First Paint	1.1s	DOM Int.	1.2s
DOM Loaded	1.2s	Onload	1.6s	Fully Loaded	1.6s

IMPACT	AUDIT	
Low	Serve static assets with an efficient cache policy	Potential savings of 50.7KB
Low	Avoid long main-thread tasks	5 long tasks found
Low	Avoid chaining critical requests	33 chains found
Low	Serve images in next-gen formats	Potential savings of 8.61KB
Low	Avoid an excessive DOM size	508 elements
Low	Avoid enormous network payloads	Total size was 796KB
Low	Properly size images	Potential savings of 10.3KB
Low	Efficiently encode images	Potential savings of 8.03KB
Low	Ensure text remains visible during webfont load	1 font found
Low	Reduce JavaScript execution time	182ms spent executing JavaScript
Low	Reduce unused CSS	Potential savings of 54.6KB
Low	Reduce initial server response time	Root document took 41ms
Low	Avoid serving legacy JavaScript to modern browsers	Potential savings of 104B
Low	Minify CSS	Potential savings of 2.67KB
Low	Avoid non-composited animations	15 animated elements found
Low	Minify JavaScript	Potential savings of 2.06KB
Low	Reduce unused JavaScript	Potential savings of 56.2KB
N/A	Largest Contentful Paint element	1 element found
N/A	Minimize main-thread work	Main-thread busy for 1.4s
N/A	User Timing marks and measures	
N/A	Reduce the impact of third-party code	