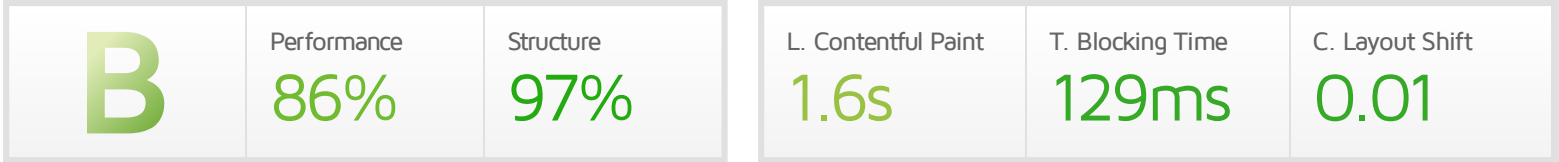




Performance Report for: <https://asgservices.uk/>

Report generated: Thu, Nov 3, 2022 3:13 PM +0000
 Test Server Location: London, UK
 Using: Chrome (Desktop) 103.0.5060.134, Lighthouse 9.6.4



Top Issues

IMPACT	AUDIT	
Med	Serve static assets with an efficient cache policy	Potential savings of 513KB
Low	Eliminate render-blocking resources <small>FCP LCP</small>	Potential savings of 80ms
Low	Avoid long main-thread tasks <small>TBT</small>	8 long tasks found
Low	Avoid an excessive DOM size <small>TBT</small>	567 elements
Low	Avoid enormous network payloads <small>LCP</small>	Total size was 1.25MB

Page Details



Total Page Size - 1.25MB



Total Page Requests - 83



■ HTML
 ■ JS
 ■ CSS
 ■ IMG
 ■ Video
 ■ Font
 ■ Other

How does this affect me?

Today's web user expects a fast and seamless website experience. Delivering that fast experience can result in increased visits, conversions and overall happiness.

As if you didn't need more incentive, **Google has announced that they are using page speed in their ranking algorithm.**

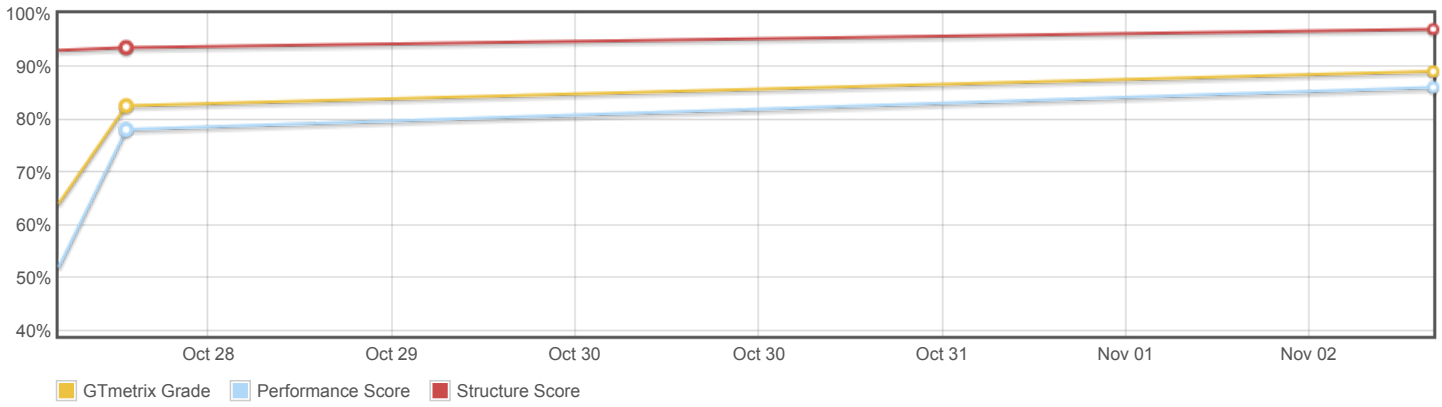
About GTmetrix



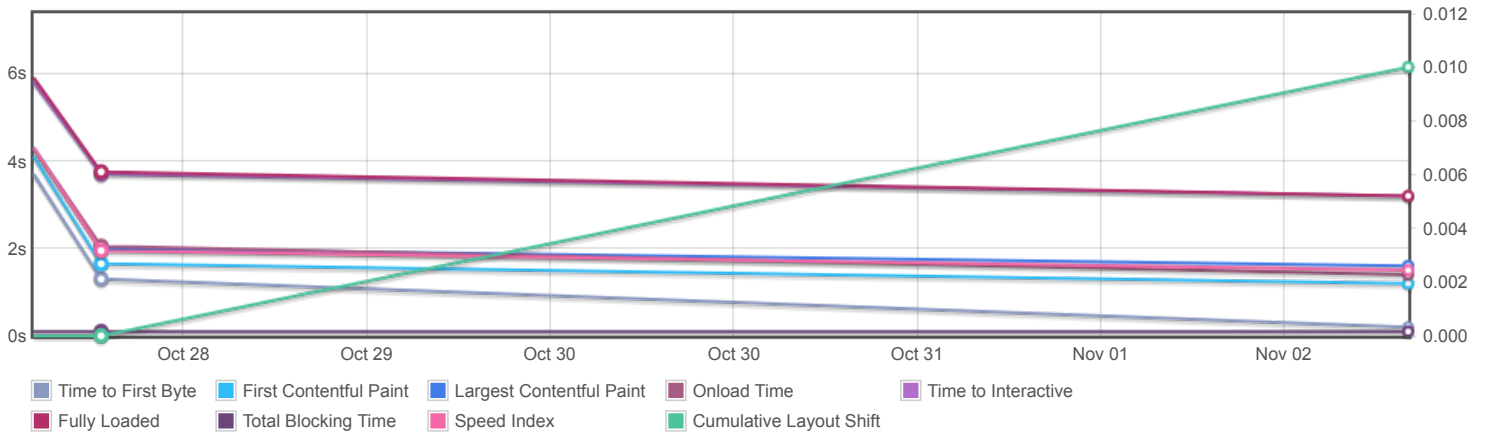
GTmetrix is developed by the good folks at Carbon60, a Canadian hosting company with over 26 years experience in web technology.

<https://carbon60.com/>

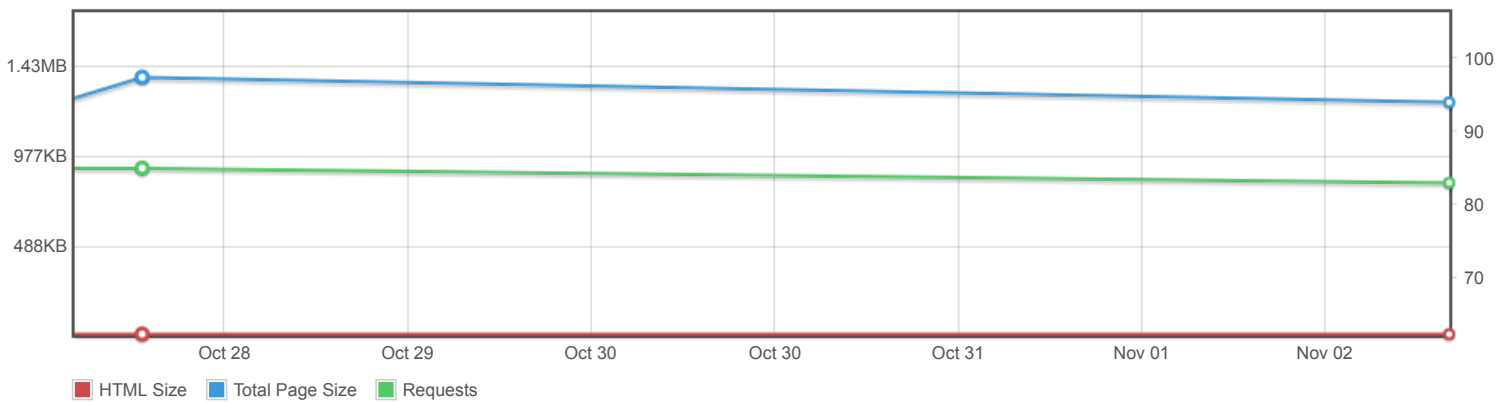
Page scores



Page metrics

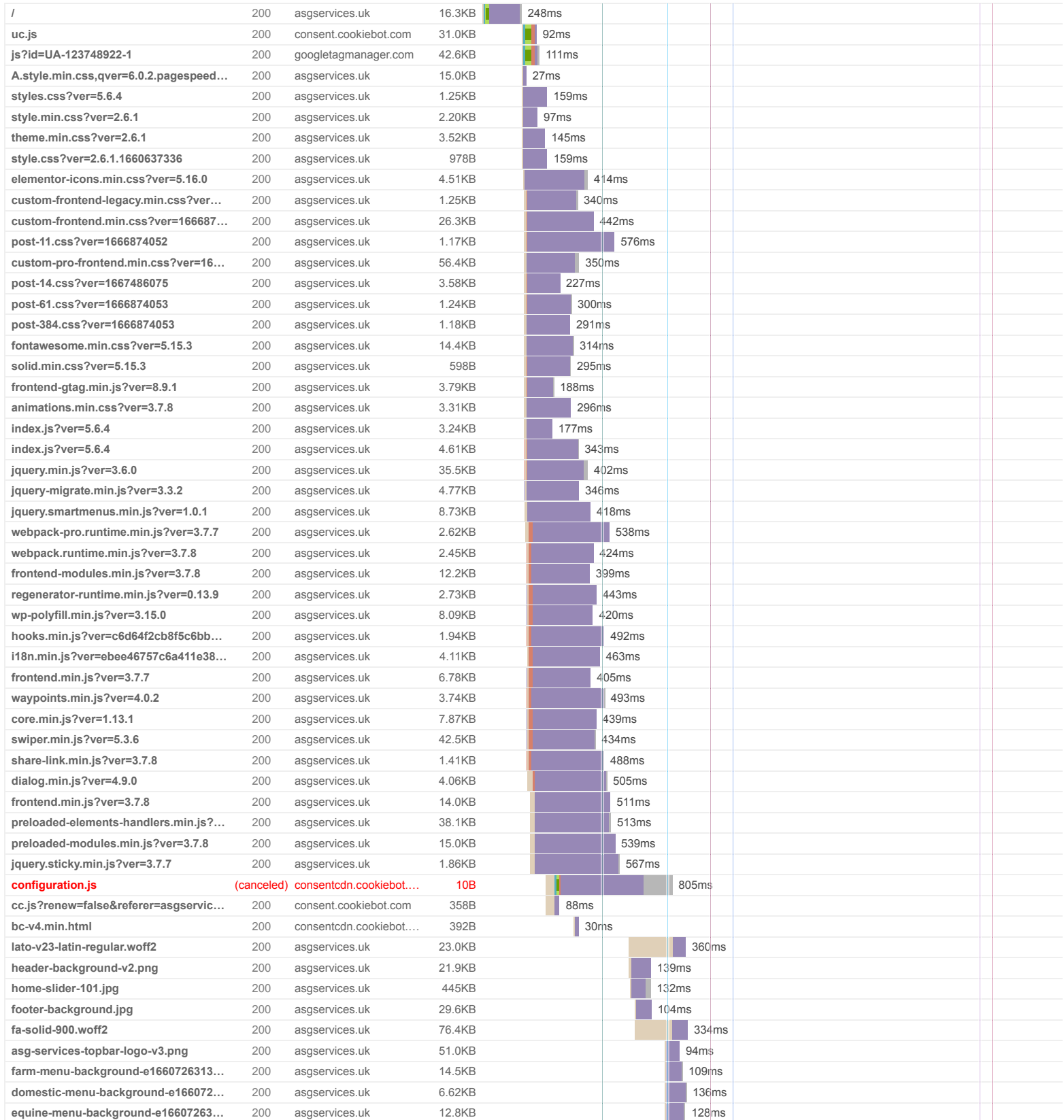


Page sizes and request counts



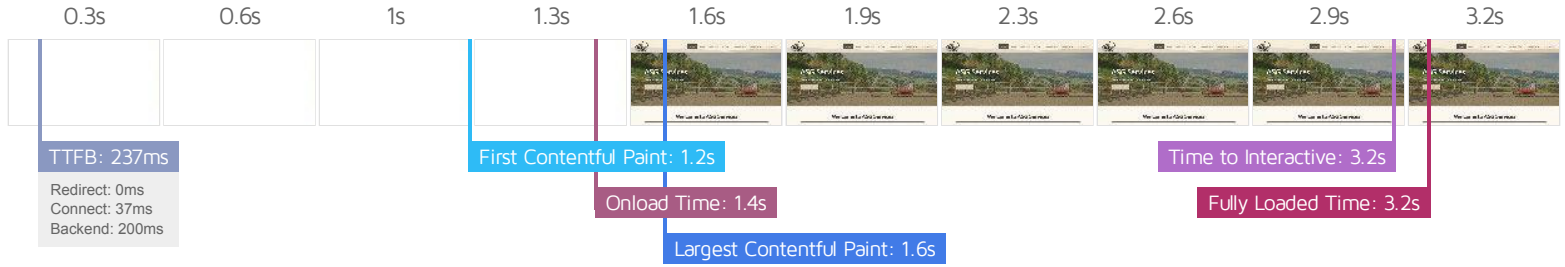
The waterfall chart displays the loading behaviour of your site in your selected browser. It can be used to discover simple issues such as 404's or more complex issues such as external resources blocking page rendering.

ASG Services - Groundworks and Fabrication



js?id=UA-123748922-1	200	googletagmanager.com	0			6ms
analytics.js	200	google-analytics.com	19.6KB			59ms
wp-emoji-release.min.js?ver=6.0.2	200	asgservices.uk	5.98KB			114ms
frontend-gtag.min.js?ver=8.9.1	200	asgservices.uk	0			6ms
asg-services-favicon.png	200	asgservices.uk	14.2KB			82ms
linkid.js	200	google-analytics.com	859B			11ms
index.js?ver=5.6.4	200	asgservices.uk	0			5ms
index.js?ver=5.6.4	200	asgservices.uk	0			4ms
jquery.min.js?ver=3.6.0	200	asgservices.uk	0			7ms
jquery-migrate.min.js?ver=3.3.2	200	asgservices.uk	0			3ms
jquery.smartmenus.min.js?ver=1.0.1	200	asgservices.uk	0			4ms
webpack-pro.runtime.min.js?ver=3.7.7	200	asgservices.uk	0			4ms
webpack.runtime.min.js?ver=3.7.8	200	asgservices.uk	0			12ms
frontend-modules.min.js?ver=3.7.8	200	asgservices.uk	0			4ms
regenerator-runtime.min.js?ver=0.13.9	200	asgservices.uk	0			4ms
wp-polyfill.min.js?ver=3.15.0	200	asgservices.uk	0			4ms
hooks.min.js?ver=c6d64f2cb8f5c6bb...	200	asgservices.uk	0			5ms
i18n.min.js?ver=ebee46757c6a411e38...	200	asgservices.uk	0			4ms
frontend.min.js?ver=3.7.7	200	asgservices.uk	0			7ms
waypoints.min.js?ver=4.0.2	200	asgservices.uk	0			2ms
core.min.js?ver=1.13.1	200	asgservices.uk	0			4ms
swiper.min.js?ver=5.3.6	200	asgservices.uk	0			5ms
share-link.min.js?ver=3.7.8	200	asgservices.uk	0			3ms
dialog.min.js?ver=4.9.0	200	asgservices.uk	0			3ms
frontend.min.js?ver=3.7.8	200	asgservices.uk	0			3ms
preloaded-elements-handlers.min.js?...	200	asgservices.uk	0			5ms
preloaded-modules.min.js?ver=3.7.8	200	asgservices.uk	0			3ms
jquery.sticky.min.js?ver=3.7.7	200	asgservices.uk	0			5ms
eicons.woff2?5.16.0	200	asgservices.uk	91.2KB			140ms

83 Requests 1.24MB (3.39MB Uncompressed) 3.2s (Onload 1.4s)



Performance Metrics

<p>First Contentful Paint</p> <p>How quickly content like text or images are painted onto your page. A good user experience is 0.9s or less.</p>	<p>OK, but consider improvement</p> <p>1.2s</p>	<p>Time to Interactive</p> <p>How long it takes for your page to become fully interactive. A good user experience is 2.5s or less.</p>	<p>OK, but consider improvement</p> <p>3.2s</p>
<p>Speed Index</p> <p>How quickly the contents of your page are visibly populated. A good user experience is 1.3s or less.</p>	<p>OK, but consider improvement</p> <p>1.5s</p>	<p>Total Blocking Time</p> <p>How much time is blocked by scripts during your page loading process. A good user experience is 150ms or less.</p>	<p>Good - Nothing to do here</p> <p>129ms</p>
<p>Largest Contentful Paint</p> <p>How long it takes for the largest element of content (e.g. a hero image) to be painted on your page. A good user experience is 1.2s or less.</p>	<p>OK, but consider improvement</p> <p>1.6s</p>	<p>Cumulative Layout Shift</p> <p>How much your page's layout shifts as it loads. A good user experience is a score of 0.1 or less.</p>	<p>Good - Nothing to do here</p> <p>0.01</p>

Browser Timings

Redirect	0ms	Connect	37ms	Backend	200ms
TTFB	237ms	DOM Int.	750ms	DOM Loaded	752ms
First Paint	1.2s	Onload	1.4s	Fully Loaded	3.2s

IMPACT	AUDIT	
Med	Serve static assets with an efficient cache policy	Potential savings of 513KB
Low	Eliminate render-blocking resources FCP LCP	Potential savings of 80ms
Low	Avoid long main-thread tasks TBT	8 long tasks found
Low	Avoid an excessive DOM size TBT	567 elements
Low	Avoid enormous network payloads LCP	Total size was 1.25MB
Low	Properly size images	Potential savings of 25.1KB
Low	Efficiently encode images	Potential savings of 13.1KB
Low	Ensure text remains visible during webfont load FCP LCP	2 fonts found
Low	Reduce JavaScript execution time TBT	424ms spent executing JavaScript
Low	Reduce unused CSS FCP LCP	Potential savings of 110KB
Low	Serve images in next-gen formats	Potential savings of 305KB
Low	Reduce initial server response time FCP LCP	Root document took 199ms
Low	Avoid serving legacy JavaScript to modern browsers TBT	
Low	Avoid non-composited animations CLS	22 animated elements found
Low	Avoid chaining critical requests FCP LCP	40 chains found
Low	Reduce unused JavaScript LCP	Potential savings of 89.5KB
N/A	Largest Contentful Paint element LCP	1 element found
N/A	Avoid large layout shifts CLS	5 elements found
N/A	Minimize main-thread work TBT	Main-thread busy for 1.9s
N/A	Reduce the impact of third-party code TBT	Third-party code blocked the main thread for 37ms
N/A	User Timing marks and measures	