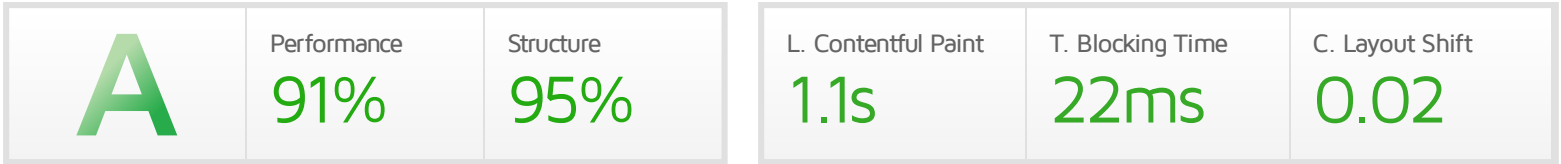




Performance Report for: https://airlinehistory.co.uk/

Report generated: Fri, Nov 19, 2021 10:45 AM +0000
 Test Server Location: London, UK
 Using: Chrome (Desktop) 90.0.4430.212, Lighthouse 8.3.0



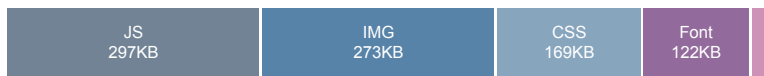
Top Issues

IMPACT	AUDIT	
Med	Eliminate render-blocking resources	Potential savings of 324ms
Low	Serve static assets with an efficient cache policy	Potential savings of 95.6KB
Low	Ensure text remains visible during webfont load	2 fonts found
Low	Reduce unused CSS	Potential savings of 114KB
Low	Avoid an excessive DOM size	392 elements

Page Details



Total Page Size - 880KB



Total Page Requests - 61



Legend: HTML, JS, CSS, IMG, Video, Font, Other

How does this affect me?

Today's web user expects a fast and seamless website experience. Delivering that fast experience can result in increased visits, conversions and overall happiness.

As if you didn't need more incentive, **Google has announced that they are using page speed in their ranking algorithm.**

About GTmetrix

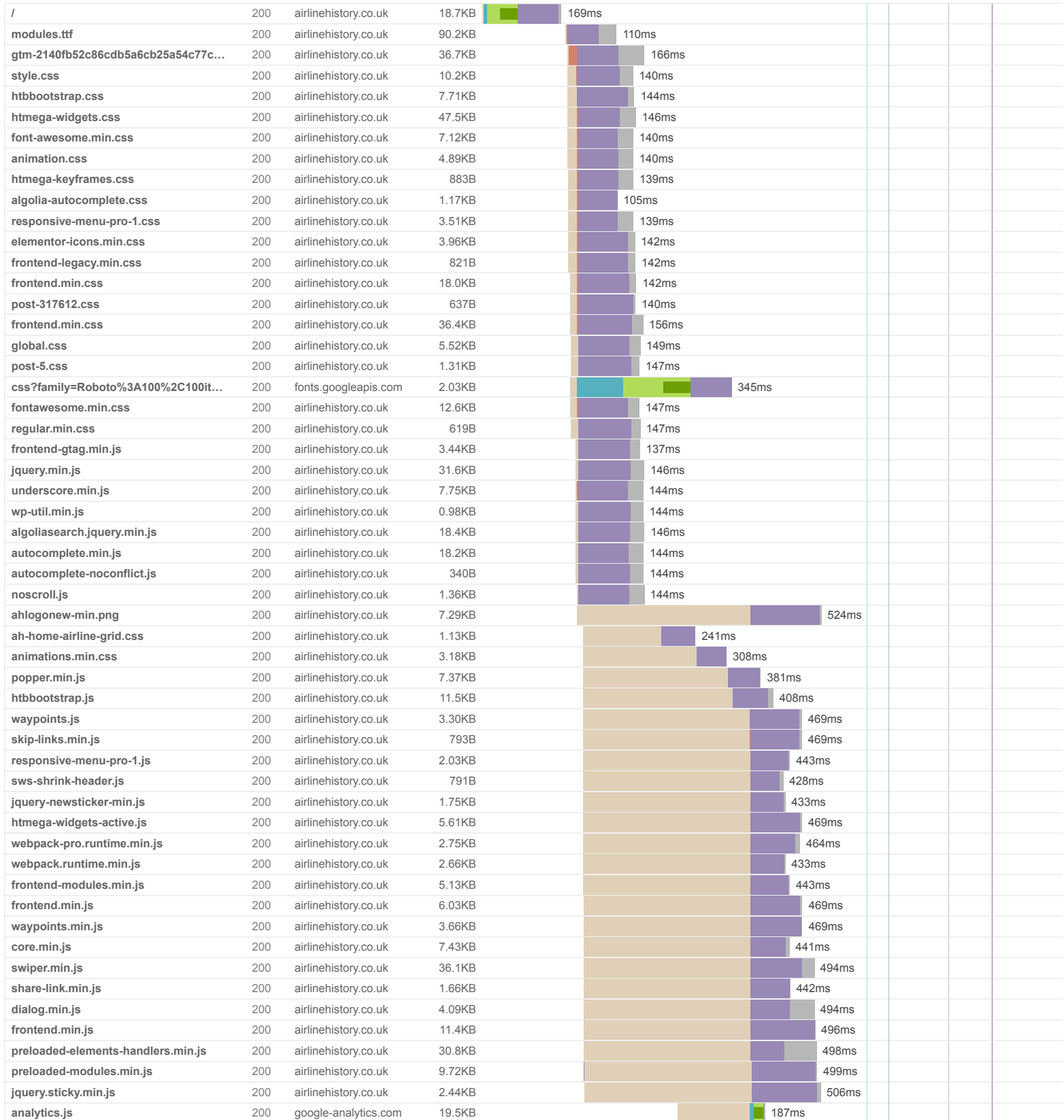


GTmetrix is developed by the good folks at Carbon60, a Canadian hosting company with over 25 years experience in web technology.

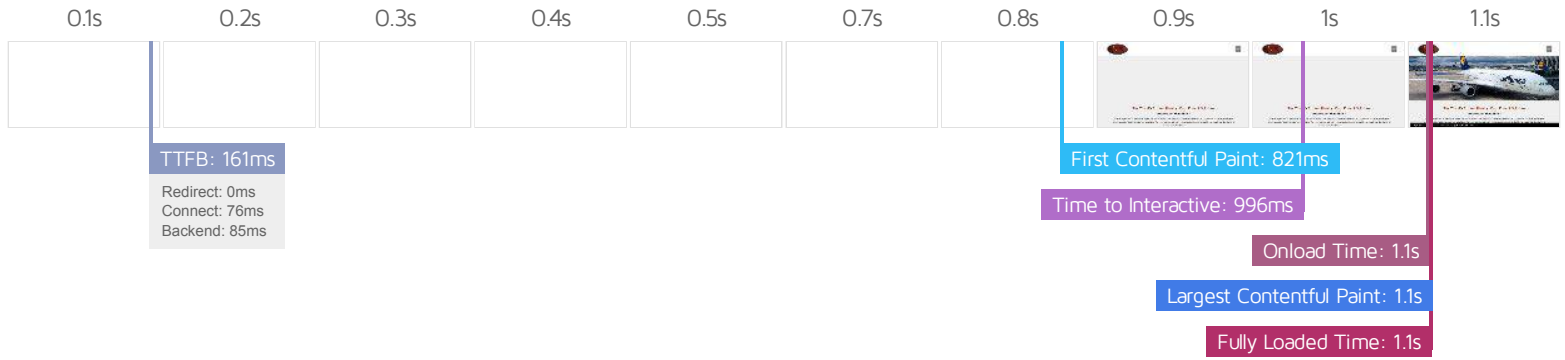
<https://carbon60.com/>

The waterfall chart displays the loading behaviour of your site in your selected browser. It can be used to discover simple issues such as 404's or more complex issues such as external resources blocking page rendering.

The World's Airlines history: Past, Present & Future - Airline History



air_plane_airport-32x32.png	200	airlinehistory.co.uk	1.27KB	138ms		
KFOmCnqEu92Fr1Mu4mxK.woff2	200	fonts.gstatic.com	15.3KB	236ms		
KFOICnqEu92Fr1MmWUifBbc4.woff2	200	fonts.gstatic.com	15.5KB	243ms		
linkid.js	200	google-analytics.com	884B	13ms		
hongkong-2-home.jpg	200	airlinehistory.co.uk	45.9KB		104ms	
airbus-home.jpg	200	airlinehistory.co.uk	102KB		131ms	
hongkong-home.jpg	200	airlinehistory.co.uk	117KB		132ms	
61 Requests 878KB (2.58MB Uncompressed) Fully Loaded 1.1s (Onload 1.1s)						



Performance Metrics

<p>First Contentful Paint</p> <p>How quickly content like text or images are painted onto your page. A good user experience is 0.9s or less.</p>	<p>Good - Nothing to do here</p> <p>821ms</p>	<p>Time to Interactive</p> <p>How long it takes for your page to become fully interactive. A good user experience is 2.5s or less.</p>	<p>Good - Nothing to do here</p> <p>995ms</p>
<p>Speed Index</p> <p>How quickly the contents of your page are visibly populated. A good user experience is 1.3s or less.</p>	<p>Much longer than recommended</p> <p>2.9s</p>	<p>Total Blocking Time</p> <p>How much time is blocked by scripts during your page loading process. A good user experience is 150ms or less.</p>	<p>Good - Nothing to do here</p> <p>22ms</p>
<p>Largest Contentful Paint</p> <p>How long it takes for the largest element of content (e.g. a hero image) to be painted on your page. A good user experience is 1.2s or less.</p>	<p>Good - Nothing to do here</p> <p>1.1s</p>	<p>Cumulative Layout Shift</p> <p>How much your page's layout shifts as it loads. A good user experience is a score of 0.1 or less.</p>	<p>Good - Nothing to do here</p> <p>0.02</p>

Browser Timings

Redirect	0ms	Connect	76ms	Backend	85ms
TTFB	161ms	First Paint	821ms	DOM Int.	866ms
DOM Loaded	867ms	Onload	1.1s	Fully Loaded	1.1s

IMPACT	AUDIT	
Med	Eliminate render-blocking resources	Potential savings of 324ms
Low	Serve static assets with an efficient cache policy	Potential savings of 95.6KB
Low	Ensure text remains visible during webfont load	2 fonts found
Low	Reduce unused CSS	Potential savings of 114KB
Low	Avoid an excessive DOM size	392 elements
Low	Avoid enormous network payloads	Total size was 880KB
Low	Avoid long main-thread tasks	2 long tasks found
Low	Reduce JavaScript execution time	128ms spent executing JavaScript
Low	Serve images in next-gen formats	Potential savings of 38.8KB
Low	Reduce initial server response time	Root document took 85ms
Low	Avoid serving legacy JavaScript to modern browsers	Potential savings of 5.75KB
Low	Avoid large layout shifts	1 element found
Low	Minify CSS	Potential savings of 13.4KB
Low	Minify JavaScript	Potential savings of 7.18KB
Low	Avoid chaining critical requests	50 chains found
Low	Reduce unused JavaScript	Potential savings of 25.7KB
N/A	Largest Contentful Paint element	1 element found
N/A	Minimize main-thread work	Main-thread busy for 760ms
N/A	Reduce the impact of third-party code	Total size was 54.3KB
N/A	User Timing marks and measures	